

KRT5 antibody

Catalog No: #38435

Package Size: #38435-1 50ul #38435-2 100ul

Orders: order@signalwayantibody.comSupport: tech@signalwayantibody.com

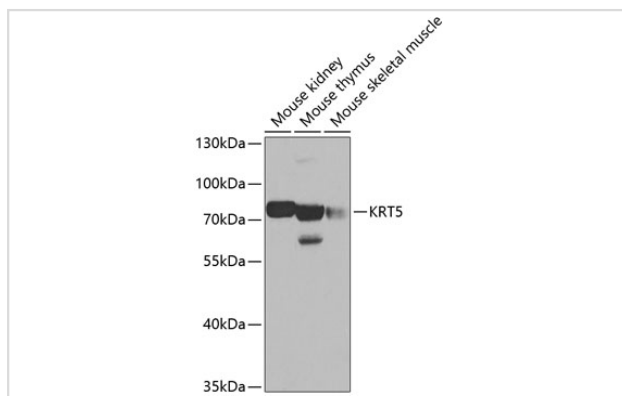
Description

| | |
|-----------------------|--|
| Product Name | KRT5 antibody |
| Host Species | Rabbit |
| Clonality | Polyclonal |
| Purification | Antibodies were purified by affinity purification using immunogen. |
| Applications | WB,IHC,IF |
| Species Reactivity | Human,Mouse |
| Specificity | The antibody detects endogenous level of total KRT5 protein. |
| Immunogen Type | Recombinant Protein |
| Immunogen Description | Recombinant protein of human KRT5. |
| Target Name | KRT5 |
| Other Names | K5; CK5; DDD; EBS2; KRT5A; |
| Accession No. | Swiss-Prot#: P13647NCBI Gene ID: 3852 |
| Uniprot | P13647 |
| GeneID | 3852; |
| SDS-PAGE MW | 62kd |
| Concentration | 1.0mg/ml |
| Formulation | Supplied at 1.0mg/mL in phosphate buffered saline (without Mg ²⁺ and Ca ²⁺), pH 7.4, 150mM NaCl, 0.02% sodium azide and 50% glycerol. |
| Storage | Store at -20°C |

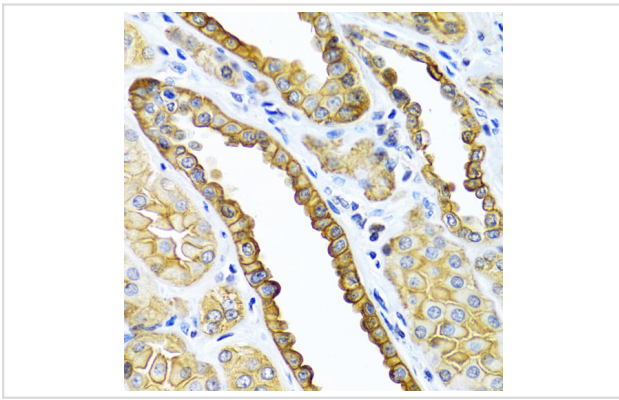
Application Details

WB □ 1:500 - 1:2000 IHC □ 1:50 - 1:200 IF □ 1:50 - 1:200

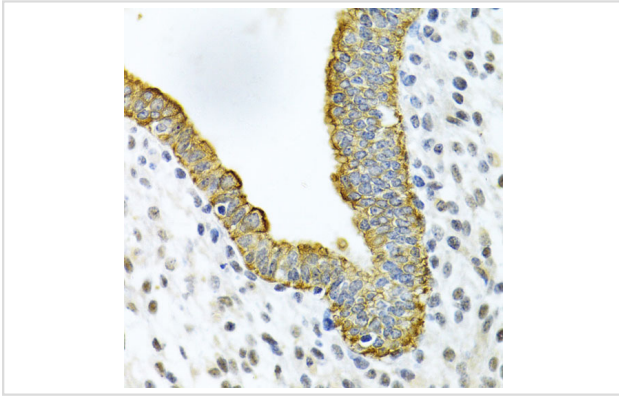
Images



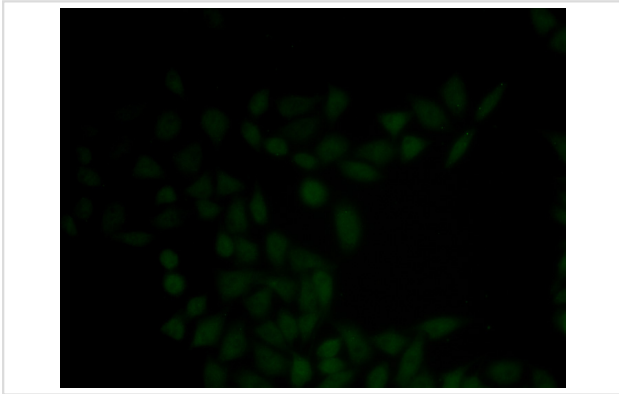
Western blot analysis of extracts of various cell lines, using KRT5 at 1:500 dilution.



Immunohistochemistry of paraffin-embedded human kidney using KRT5 at dilution of 1:100 (40x lens).



Immunohistochemistry of paraffin-embedded human uterine cancer using KRT5 at dilution of 1:100 (40x lens).



Immunofluorescence analysis of HeLa cells using KRT5 .

Background

The protein encoded by this gene is a member of the keratin gene family. The type II cytokeratins consist of basic or neutral proteins which are arranged in pairs of heterotypic keratin chains coexpressed during differentiation of simple and stratified epithelial tissues. This type II cytokeratin is specifically expressed in the basal layer of the epidermis with family member KRT14. Mutations in these genes have been associated with a complex of diseases termed epidermolysis bullosa simplex. The type II cytokeratins are clustered in a region of chromosome 12q12-q13.

Note: This product is for in vitro research use only