

PDCD10 antibody

Catalog No: #38464

Package Size: #38464-1 50ul #38464-2 100ul

Orders: order@signalwayantibody.comSupport: tech@signalwayantibody.com

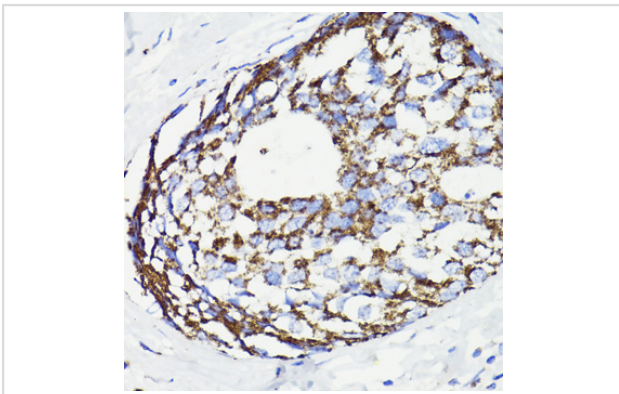
Description

Product Name	PDCD10 antibody
Host Species	Rabbit
Clonality	Polyclonal
Isotype	IgG
Purification	Affinity purification
Applications	WB,IHC,IF
Species Reactivity	Human,Mouse,Rat
Specificity	The antibody detects endogenous level of total PDCD10 protein.
Immunogen Type	Protein
Immunogen Description	Recombinant fusion protein of human PDCD10 (NP_009148.2).
Target Name	PDCD10
Other Names	PDCD10;CCM3;TFAR15
Accession No.	Uniprot:Q9BUL8GeneID:11235
Uniprot	Q9BUL8
GeneID	11235
SDS-PAGE MW	Refer to figures
Concentration	1.0mg/ml
Formulation	PBS with 0.02% sodium azide,50% glycerol,pH7.3.
Storage	Store at -20°C. Avoid freeze / thaw cycles.

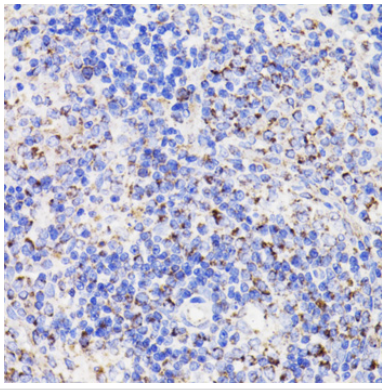
Application Details

WB 1:500 - 1:2000 IHC 1:50 - 1:200 IF 1:50 - 1:200

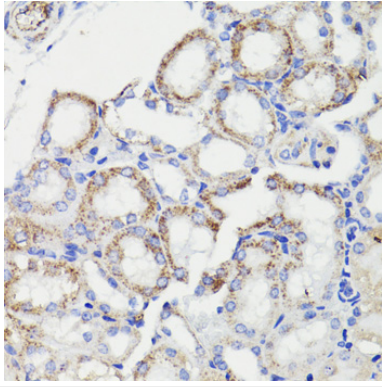
Images



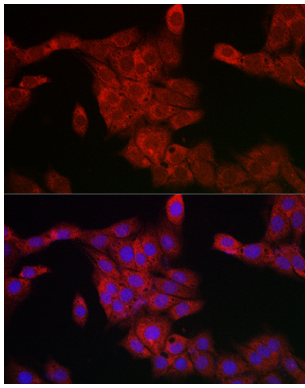
Immunohistochemistry of paraffin-embedded human breast cancer using PDCD10 antibody.



Immunohistochemistry of paraffin-embedded rat spleen using PDCD10 antibody.



Immunohistochemistry of paraffin-embedded mouse kidney using PDCD10 antibody.



Immunofluorescence analysis of PC-12 cells using PDCD10 Rabbit pAb.

Background

This gene encodes an evolutionarily conserved protein associated with cell apoptosis. The protein interacts with the serine/threonine protein kinase MST4 to modulate the extracellular signal-regulated kinase (ERK) pathway. It also interacts with and is phosphorylated by serine/threonine kinase 25, and is thought to function in a signaling pathway essential for vascular development. Mutations in this gene are one cause of cerebral cavernous malformations, which are vascular malformations that cause seizures and cerebral hemorrhages. Multiple alternatively spliced variants, encoding the same protein, have been identified.

Note: This product is for in vitro research use only