

PVALB antibody

Catalog No: #38467

Package Size: #38467-1 50ul #38467-2 100ul

Orders: order@signalwayantibody.comSupport: tech@signalwayantibody.com

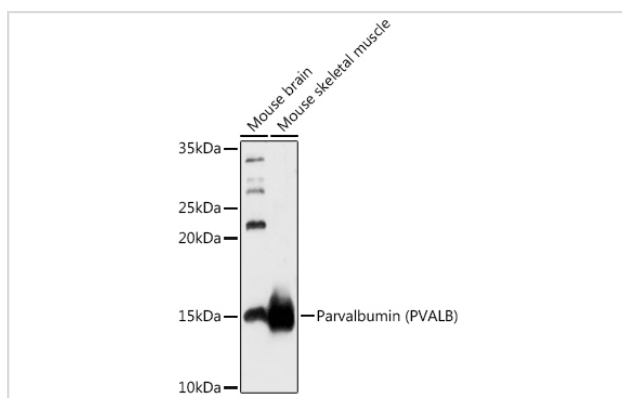
Description

| | |
|-----------------------|--|
| Product Name | PVALB antibody |
| Host Species | Rabbit |
| Clonality | Polyclonal |
| Isotype | IgG |
| Purification | Affinity purification |
| Applications | WB,IHC |
| Species Reactivity | Human,Mouse,Rat |
| Specificity | The antibody detects endogenous level of total PVALB protein. |
| Immunogen Type | Protein |
| Immunogen Description | Recombinant fusion protein of human Parvalbumin (Parvalbumin (PVALB)) (NP_002845.1). |
| Target Name | PVALB |
| Other Names | D22S749;Parvalbumin;PVALB;parvalbumin |
| Accession No. | Uniprot:P20472GenelD:5816 |
| Uniprot | P20472 |
| GenelD | 5816 |
| SDS-PAGE MW | 15KDa |
| Concentration | 1.0mg/ml |
| Formulation | PBS with 0.02% sodium azide,50% glycerol,pH7.3. |
| Storage | Store at -20°C. Avoid freeze / thaw cycles. |

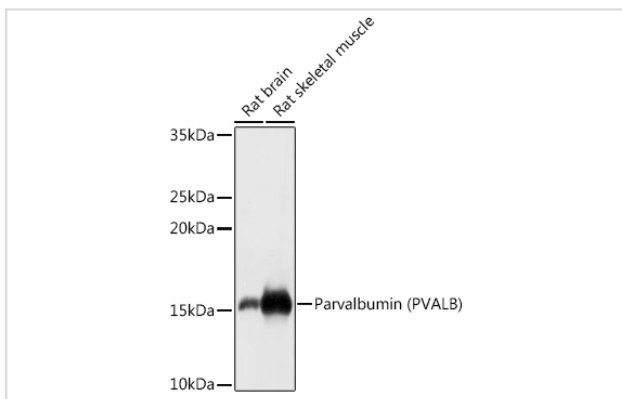
Application Details

WB □ 1:500 - 1:2000 IHC □ 1:50 - 1:200

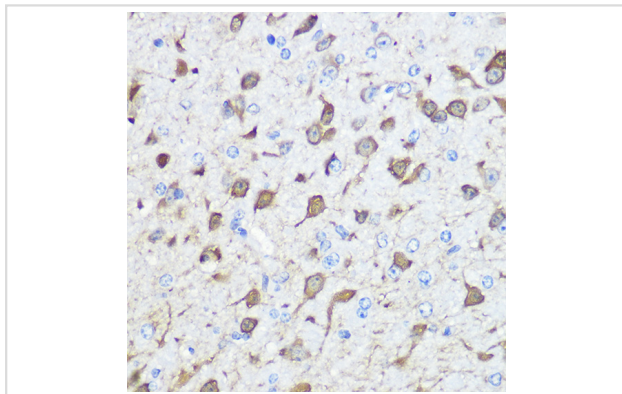
Images



Western blot analysis of extracts of various cell lines, using Parvalbumin (PVALB) antibody.



Western blot analysis of extracts of various cell lines, using Parvalbumin (PVALB) antibody.



Immunohistochemistry of paraffin-embedded human esophageal using Parvalbumin (Parvalbumin (PVALB)) Rabbit pAb.

Background

The protein encoded by this gene is a high affinity calcium ion-binding protein that is structurally and functionally similar to calmodulin and troponin C. The encoded protein is thought to be involved in muscle relaxation. Alternative splicing results in multiple transcript variants.

Note: This product is for in vitro research use only