

DRD1 antibody

Catalog No: #38482

Package Size: #38482-1 50ul #38482-2 100ul

Orders: order@signalwayantibody.com

Support: tech@signalwayantibody.com

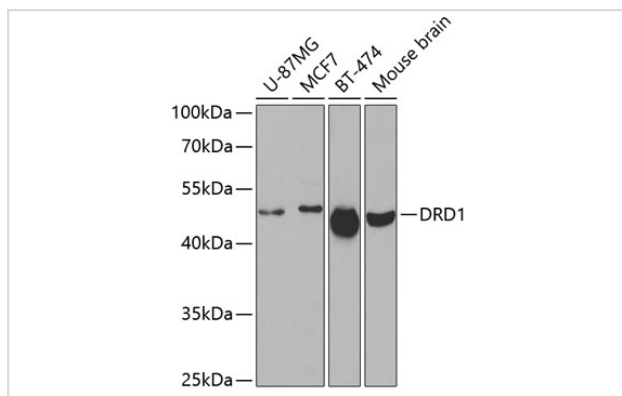
Description

| | |
|-----------------------|--|
| Product Name | DRD1 antibody |
| Host Species | Rabbit |
| Clonality | Polyclonal |
| Purification | Antibodies were purified by affinity purification using immunogen. |
| Applications | WB |
| Species Reactivity | Human,Mouse |
| Specificity | The antibody detects endogenous level of total DRD1 protein. |
| Immunogen Type | Peptide |
| Immunogen Description | A synthetic peptide of human DRD1. |
| Target Name | DRD1 |
| Other Names | DADR;DRD1A; |
| Accession No. | Swiss-Prot#: P21728NCBI Gene ID: 1812 |
| Uniprot | P21728 |
| GeneID | 1812; |
| SDS-PAGE MW | 49kd |
| Concentration | 1.0mg/ml |
| Formulation | Supplied at 1.0mg/mL in phosphate buffered saline (without Mg ²⁺ and Ca ²⁺), pH 7.4, 150mM NaCl, 0.02% sodium azide and 50% glycerol. |
| Storage | Store at -20°C |

Application Details

WB 1:500 - 1:2000

Images



Western blot analysis of extracts of various cell lines, using DRD1 at 1:500 dilution.

Background

This gene encodes the D1 subtype of the dopamine receptor. The D1 subtype is the most abundant dopamine receptor in the central nervous system. This G-protein coupled receptor stimulates adenylyl cyclase and activates cyclic AMP-dependent protein kinases. D1 receptors regulate neuronal growth and development, mediate some behavioral responses, and modulate dopamine receptor D2-mediated events. Alternate transcription initiation sites result in two transcript variants of this gene.

Note: This product is for in vitro research use only