

LAMP3 antibody

Catalog No: #38484

Package Size: #38484-1 50ul #38484-2 100ul

Orders: order@signalwayantibody.com

Support: tech@signalwayantibody.com

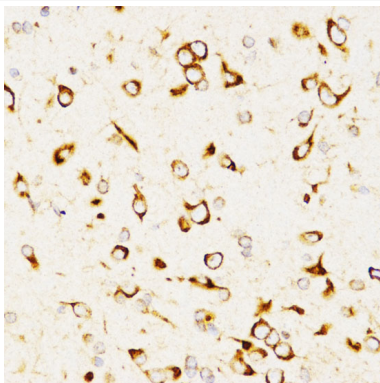
Description

Product Name	LAMP3 antibody
Host Species	Rabbit
Clonality	Polyclonal
Purification	Antibodies were purified by affinity purification using immunogen.
Applications	WB,IHC
Species Reactivity	Human,Mouse,Rat
Specificity	The antibody detects endogenous level of total LAMP3 protein.
Immunogen Type	Peptide
Immunogen Description	A synthetic peptide of human LAMP3.
Target Name	LAMP3
Other Names	LAMP; CD208; DCLAMP; LAMP-3;TSC403; DC LAMP; DC-LAMP;
Accession No.	Swiss-Prot#: Q9UQV4NCBI Gene ID: 27074
Uniprot	Q9UQV4
GeneID	27074;
SDS-PAGE MW	44kd
Concentration	1.0mg/ml
Formulation	Supplied at 1.0mg/mL in phosphate buffered saline (without Mg ²⁺ and Ca ²⁺), pH 7.4, 150mM NaCl, 0.02% sodium azide and 50% glycerol.
Storage	Store at -20°C

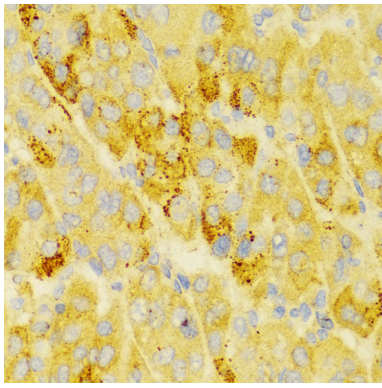
Application Details

WB □ 1:500 - 1:2000 IHC □ 1:50 - 1:100

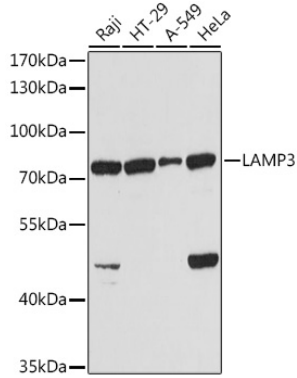
Images



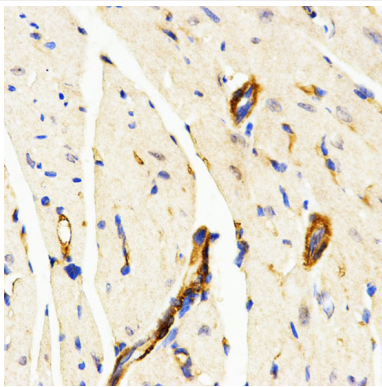
Immunohistochemistry of paraffin-embedded rat brain using LAMP3 at dilution of 1:200 (40x lens).



Immunohistochemistry of paraffin-embedded human liver cancer using LAMP3 at dilution of 1:100 (40x lens).



Western blot analysis of extracts of various cell lines, using LAMP3 at 1:1000 dilution.



Immunohistochemistry of paraffin-embedded mouse heart using LAMP3 at dilution of 1:200 (40x lens).

Background

Lysosome-associated membrane glycoprotein 3 is a protein that in humans is encoded by the LAMP3 gene. LAMP3 has also recently been designated CD208. Dendritic cells (DCs) are the most potent antigen-presenting cells. Immature DCs efficiently capture antigens and differentiate into interdigitating dendritic cells (IDCs) in lymphoid tissues that induce primary T-cell responses. May play a role in dendritic cell function and in adaptive immunity.

Note: This product is for in vitro research use only