

DISC1 antibody

Catalog No: #38487

Package Size: #38487-1 50ul #38487-2 100ul

Orders: order@signalwayantibody.com

Support: tech@signalwayantibody.com

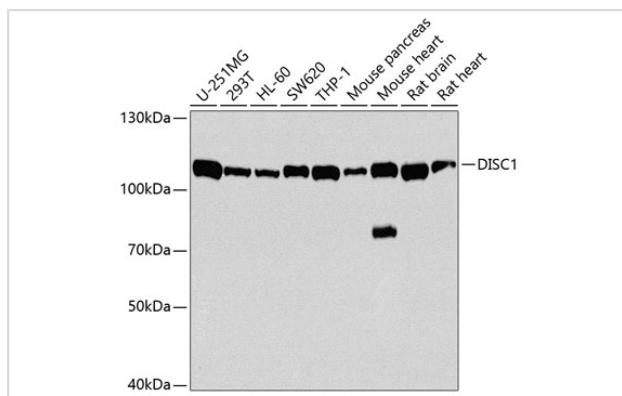
Description

| | |
|-----------------------|---|
| Product Name | DISC1 antibody |
| Host Species | Rabbit |
| Clonality | Polyclonal |
| Isotype | IgG |
| Purification | Affinity purification |
| Applications | WB |
| Species Reactivity | Human,Mouse,Rat |
| Specificity | The antibody detects endogenous level of total DISC1 protein. |
| Immunogen Type | Peptide |
| Immunogen Description | Recombinant fusion protein of human DISC1 (NP_001158009.1). |
| Target Name | DISC1 |
| Other Names | DISC1;C1orf136;SCZD9 |
| Accession No. | Uniprot:Q9NRI5GeneID:27185 |
| Uniprot | Q9NRI5 |
| GeneID | 27185 |
| SDS-PAGE MW | 105kDa |
| Concentration | 1.0mg/ml |
| Formulation | PBS with 0.02% sodium azide,50% glycerol,pH7.3. |
| Storage | Store at -20°C. Avoid freeze / thaw cycles. |

Application Details

WB □ 1:500 - 1:2000

Images



Western blot analysis of extracts of various cell lines, using DISC1 antibody.

Background

This gene encodes a protein with multiple coiled coil motifs which is located in the nucleus, cytoplasm and mitochondria. The protein is involved in neurite outgrowth and cortical development through its interaction with other proteins. This gene is disrupted in a t(1;11)(q42.1;q14.3) translocation which segregates with schizophrenia and related psychiatric disorders in a large Scottish family. Alternate transcriptional splice variants, encoding different isoforms, have been characterized.

Note: This product is for in vitro research use only