

## PTGER1 antibody

Catalog No: #38495

Package Size: #38495-1 50ul #38495-2 100ul

Orders: order@signalwayantibody.com

Support: tech@signalwayantibody.com

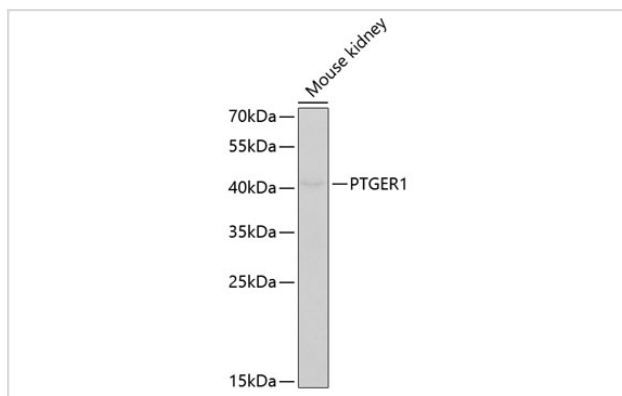
## Description

Product Name	PTGER1 antibody
Host Species	Rabbit
Clonality	Polyclonal
Purification	Antibodies were purified by affinity purification using immunogen.
Applications	WB
Species Reactivity	Mouse
Specificity	The antibody detects endogenous level of total PTGER1 protein.
Immunogen Type	Peptide
Immunogen Description	A synthetic peptide of human PTGER1.
Target Name	PTGER1
Other Names	EP1;
Accession No.	Swiss-Prot#: P34995NCBI Gene ID: 5731
Uniprot	P34995
GeneID	5731;
SDS-PAGE MW	42kd
Concentration	1.0mg/ml
Formulation	Supplied at 1.0mg/mL in phosphate buffered saline (without Mg <sup>2+</sup> and Ca <sup>2+</sup> ), pH 7.4, 150mM NaCl, 0.02% sodium azide and 50% glycerol.
Storage	Store at -20°C

## Application Details

WB □ 1:500 - 1:2000

## Images



Western blot analysis of extracts of mouse kidney, using PTGER1 at 1:400 dilution.

## Background

---

The protein encoded by this gene is a member of the G protein-coupled receptor family. This protein is one of four receptors identified for prostaglandin E2 (PGE2). Through a phosphatidylinositol-calcium second messenger system, G-Q proteins mediate this receptor's activity. Knockout studies in mice suggested a role of this receptor in mediating algisia and in regulation of blood pressure. Studies in mice also suggested that this gene may mediate adrenocorticotrophic hormone response to bacterial endotoxin.

---

Note: This product is for in vitro research use only