

CLDN3 antibody

Catalog No: #38504

Package Size: #38504-1 50ul #38504-2 100ul

Orders: order@signalwayantibody.com

Support: tech@signalwayantibody.com

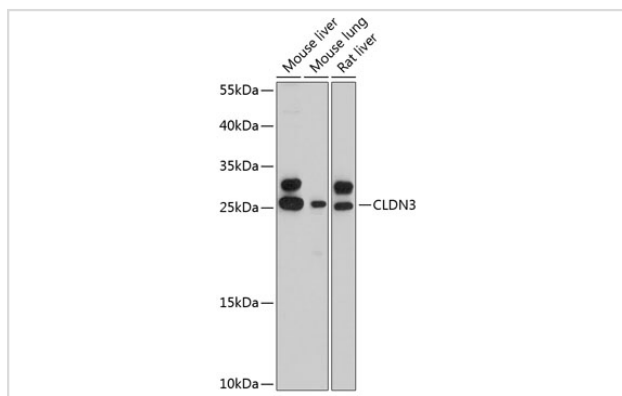
Description

Product Name	CLDN3 antibody
Host Species	Rabbit
Clonality	Polyclonal
Purification	Antibodies were purified by affinity purification using immunogen.
Applications	WB
Species Reactivity	Mouse,Rat
Specificity	The antibody detects endogenous level of total CLDN3 protein.
Immunogen Type	Peptide
Immunogen Description	A synthetic peptide of human CLDN3.
Target Name	CLDN3
Other Names	RVP1;HRVP1;C7orf1;CPE-R2;CPETR2;
Accession No.	Swiss-Prot#: O15551NCBI Gene ID: 1365
Uniprot	O15551
GeneID	1365;
SDS-PAGE MW	23kd
Concentration	1.0mg/ml
Formulation	Supplied at 1.0mg/mL in phosphate buffered saline (without Mg ²⁺ and Ca ²⁺), pH 7.4, 150mM NaCl, 0.02% sodium azide and 50% glycerol.
Storage	Store at -20°C

Application Details

WB □ 1:500 - 1:2000

Images



Western blot analysis of extracts of various cell lines, using CLDN3 at 1:3000 dilution.

Background

Tight junctions represent one mode of cell-to-cell adhesion in epithelial or endothelial cell sheets, forming continuous seals around cells and serving as a physical barrier to prevent solutes and water from passing freely through the paracellular space. These junctions are comprised of sets of continuous networking strands in the outwardly facing cytoplasmic leaflet, with complementary grooves in the inwardly facing extracytoplasmic leaflet. The protein encoded by this intronless gene, a member of the claudin family, is an integral membrane protein and a component of tight junction strands. It is also a low-affinity receptor for *Clostridium perfringens* enterotoxin, and shares aa sequence similarity with a putative apoptosis-related protein found in rat.

Note: This product is for in vitro research use only