

## KLK2 antibody

Catalog No: #38527

Package Size: #38527-1 50ul #38527-2 100ul

Orders: order@signalwayantibody.com

Support: tech@signalwayantibody.com

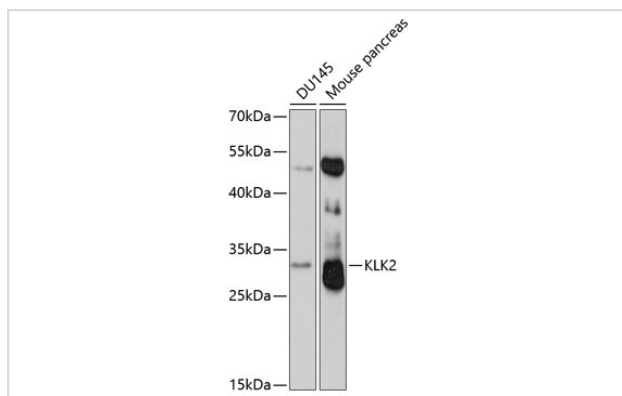
## Description

Product Name	KLK2 antibody
Host Species	Rabbit
Clonality	Polyclonal
Purification	Antibodies were purified by affinity purification using immunogen.
Applications	WB
Species Reactivity	Human,Mouse
Specificity	The antibody detects endogenous level of total KLK2 protein.
Immunogen Type	Peptide
Immunogen Description	A synthetic peptide of human KLK2.
Target Name	KLK2
Other Names	hK2; hGK-1; KLK2A2
Accession No.	Swiss-Prot#: P20151NCBI Gene ID: 3817
Uniprot	P20151
GeneID	3817;
SDS-PAGE MW	29kd
Concentration	1.0mg/ml
Formulation	Supplied at 1.0mg/mL in phosphate buffered saline (without Mg <sup>2+</sup> and Ca <sup>2+</sup> ), pH 7.4, 150mM NaCl, 0.02% sodium azide and 50% glycerol.
Storage	Store at -20°C

## Application Details

WB □ 1:500 - 1:2000

## Images



Western blot analysis of extracts of various cell lines, using KLK2 at 1:3000 dilution.

## Background

---

This gene encodes a member of the granular kallikrein protein family. Kallikreins are a subgroup of serine proteases that are clustered on chromosome 19. Members of this family are involved in a diverse array of biological functions. The protein encoded by this gene is a highly active trypsin-like serine protease that selectively cleaves at arginine residues. This protein is primarily expressed in prostatic tissue and is responsible for cleaving pro-prostate-specific antigen into its enzymatically active form. This gene is highly expressed in prostate tumor cells and may be a prognostic marker for prostate cancer risk. Alternate splicing results in both coding and non-coding transcript variants.

---

Note: This product is for in vitro research use only