

LEPR antibody

Catalog No: #38530

Package Size: #38530-1 50ul #38530-2 100ul

Orders: order@signalwayantibody.com

Support: tech@signalwayantibody.com

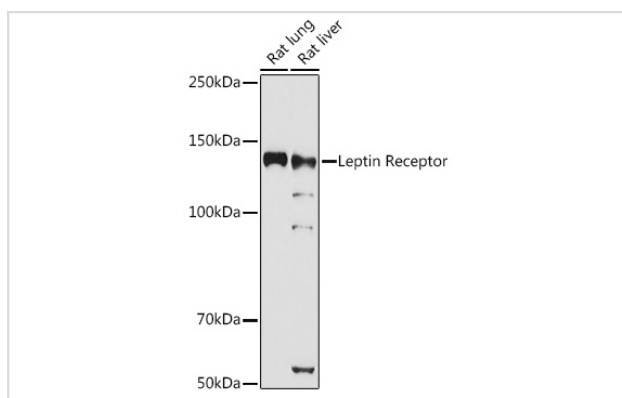
Description

Product Name	LEPR antibody
Host Species	Rabbit
Clonality	Polyclonal
Isotype	IgG
Purification	Affinity purification
Applications	WB,IF
Species Reactivity	Human,Rat
Specificity	The antibody detects endogenous level of total LEPR protein.
Immunogen Type	Peptide
Immunogen Description	A synthetic peptide of human LEPR
Target Name	LEPR
Other Names	CD295;LEP-R;LEPRD;OB-R;OBR;LEPR
Accession No.	Uniprot:P48357GenelD:3953
Uniprot	P48357
GenelD	3953
SDS-PAGE MW	140KDa
Concentration	1.0mg/ml
Formulation	PBS with 0.02% sodium azide,50% glycerol,pH7.3.
Storage	Store at -20°C. Avoid freeze / thaw cycles.

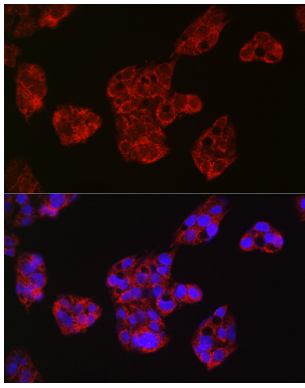
Application Details

WB □ 1:500 - 1:1000 IF □ 1:50 - 1:200

Images



Western blot analysis of extracts of various cell lines, using Leptin Receptor antibody.



Immunofluorescence analysis of HepG2 cells using Leptin Receptor Rabbit pAb.

Background

The protein encoded by this gene belongs to the gp130 family of cytokine receptors that are known to stimulate gene transcription via activation of cytosolic STAT proteins. This protein is a receptor for leptin (an adipocyte-specific hormone that regulates body weight), and is involved in the regulation of fat metabolism, as well as in a novel hematopoietic pathway that is required for normal lymphopoiesis. Mutations in this gene have been associated with obesity and pituitary dysfunction. Alternatively spliced transcript variants encoding different isoforms have been described for this gene. It is noteworthy that this gene and LEPROT gene (GeneID:54741) share the same promoter and the first 2 exons, however, encode distinct proteins (PMID:9207021).

Note: This product is for in vitro research use only