

LHB antibody

Catalog No: #38531

Package Size: #38531-1 50ul #38531-2 100ul

Orders: order@signalwayantibody.comSupport: tech@signalwayantibody.com

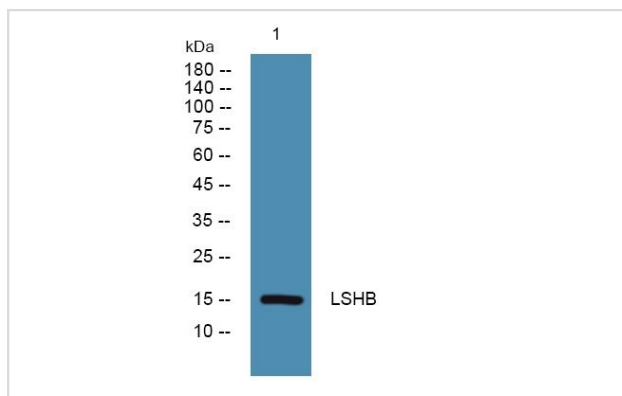
Description

Product Name	LHB antibody
Host Species	Rabbit
Clonality	Polyclonal
Purification	The antibody was affinity-purified from rabbit antiserum by affinity-chromatography using epitope-specific immunogen.
Applications	WB
Species Reactivity	Human;Mouse;Rat
Specificity	The antibody detects endogenous level of total LHB protein.
Immunogen Type	Peptide
Immunogen Description	Synthesized peptide derived from part region of human protein
Target Name	LHB
Other Names	CGB4;hLHB;LSH-B;
Accession No.	Swiss-Prot#: P01229NCBI Gene ID: 3972
Uniprot	P01229
GeneID	3972;
SDS-PAGE MW	15kd
Concentration	1.0mg/ml
Formulation	Liquid in PBS containing 50% glycerol, and 0.02% sodium azide.
Storage	Store at -20°C

Application Details

WB □ 1:500 - 1:2000

Images



Western blot analysis of extracts of K562 cells, using LHB at 1:1000 dilution.

Background

This gene is a member of the glycoprotein hormone beta chain family and encodes the beta subunit of luteinizing hormone (LH). Glycoprotein hormones are heterodimers consisting of a common alpha subunit and an unique beta subunit which confers biological specificity. LH is expressed in the pituitary gland and promotes spermatogenesis and ovulation by stimulating the testes and ovaries to synthesize steroids. The genes for the beta chains of chorionic gonadotropin and for luteinizing hormone are contiguous on chromosome 19q13.3. Mutations in this gene are associated with hypogonadism which is characterized by infertility and pseudohermaphroditism.

Note: This product is for in vitro research use only