

SLC16A4 antibody

Catalog No: #38538

Package Size: #38538-1 50ul #38538-2 100ul

Orders: order@signalwayantibody.com

Support: tech@signalwayantibody.com

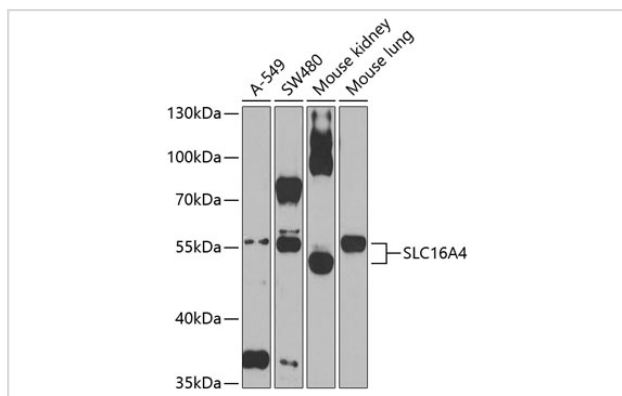
Description

Product Name	SLC16A4 antibody
Host Species	Rabbit
Clonality	Polyclonal
Purification	Antibodies were purified by affinity purification using immunogen.
Applications	WB
Species Reactivity	Human,Mouse
Specificity	The antibody detects endogenous level of total SLC16A4 protein.
Immunogen Type	Peptide
Immunogen Description	A synthetic peptide of human SLC16A4.
Target Name	SLC16A4
Other Names	MCT4; MCT5
Accession No.	Swiss-Prot#: O15374NCBI Gene ID: 9122
Uniprot	O15374
GeneID	9122;
SDS-PAGE MW	54kd
Concentration	1.0mg/ml
Formulation	Supplied at 1.0mg/mL in phosphate buffered saline (without Mg ²⁺ and Ca ²⁺), pH 7.4, 150mM NaCl, 0.02% sodium azide and 50% glycerol.
Storage	Store at -20°C

Application Details

WB □ 1:1000 - 1:2000

Images



Western blot analysis of extracts of various cell lines, using SLC16A4 at 1:1000 dilution.

Background

Proton-linked monocarboxylate transporter. Catalyzes the rapid transport across the plasma membrane of many monocarboxylates such as lactate, pyruvate, branched-chain oxo acids derived from leucine, valine and isoleucine, and the ketone bodies acetoacetate, beta-hydroxybutyrate and acetate.

Note: This product is for in vitro research use only