

CSF1R antibody

Catalog No: #38540

Package Size: #38540-1 50ul #38540-2 100ul

Orders: order@signalwayantibody.com

Support: tech@signalwayantibody.com

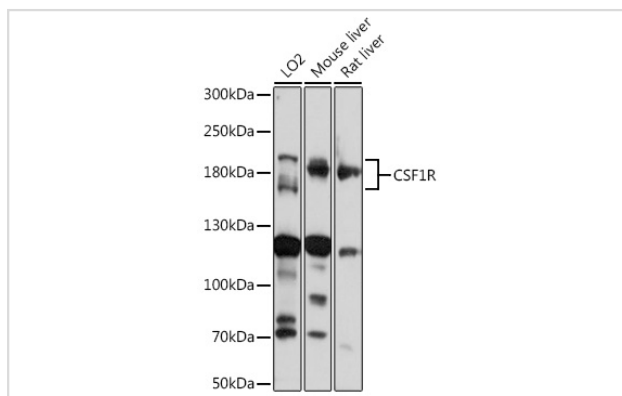
Description

Product Name	CSF1R antibody
Host Species	Rabbit
Clonality	Polyclonal
Isotype	IgG
Purification	Affinity purification
Applications	WB,IF
Species Reactivity	Human,Mouse,Rat
Specificity	The antibody detects endogenous level of total CSF1R protein.
Immunogen Type	Peptide
Immunogen Description	A synthetic peptide of human CSF1R
Target Name	CSF1R
Other Names	CSF1R;C-FMS;CD115;CSF-1R;CSFR;FIM2;FMS;HDLS;M-CSF-R;BANDDOS
Accession No.	Uniprot:P07333GenelD:1436
Uniprot	P07333
GenelD	1436
SDS-PAGE MW	150-190KDa
Concentration	1.0mg/ml
Formulation	PBS with 0.02% sodium azide,50% glycerol,pH7.3.
Storage	Store at -20°C. Avoid freeze / thaw cycles.

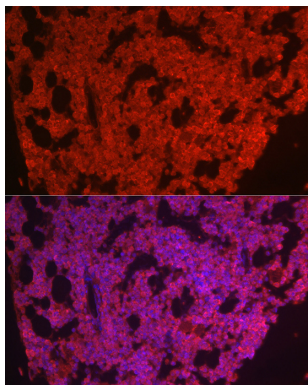
Application Details

WB □ 1:500 - 1:2000 IF □ 1:50 - 1:200

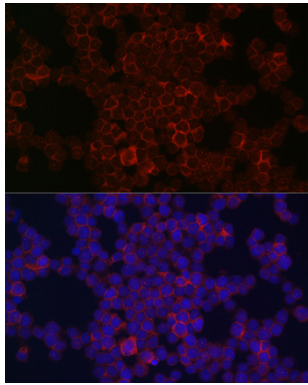
Images



Western blot analysis of extracts of various cell lines, using CSF1R antibody.



Immunofluorescence analysis of mouse bone marrow cells using CSF1R Rabbit pAb.



Immunofluorescence analysis of THP-1 cells using CSF1R Rabbit pAb.

Background

The protein encoded by this gene is the receptor for colony stimulating factor 1, a cytokine which controls the production, differentiation, and function of macrophages. This receptor mediates most if not all of the biological effects of this cytokine. Ligand binding activates the receptor kinase through a process of oligomerization and transphosphorylation. The encoded protein is a tyrosine kinase transmembrane receptor and member of the CSF1/PDGF receptor family of tyrosine-protein kinases. Mutations in this gene have been associated with a predisposition to myeloid malignancy. The first intron of this gene contains a transcriptionally inactive ribosomal protein L7 processed pseudogene oriented in the opposite direction. Alternative splicing results in multiple transcript variants. Expression of a splice variant from an LTR promoter has been found in Hodgkin lymphoma (HL), HL cell lines and anaplastic large cell lymphoma.

Note: This product is for in vitro research use only