

ABCC1 antibody

Catalog No: #38541

Package Size: #38541-1 50ul #38541-2 100ul

Orders: order@signalwayantibody.com

Support: tech@signalwayantibody.com

Description

Product Name	ABCC1 antibody
Host Species	Rabbit
Clonality	Polyclonal
Isotype	IgG
Purification	Affinity purification
Applications	WB,IHC,IF
Species Reactivity	Human,Mouse,Rat
Specificity	The antibody detects endogenous level of total ABCC1 protein.
Immunogen Type	Peptide
Immunogen Description	A synthetic peptide of human MRP1/ABCC1
Target Name	ABCC1
Other Names	ABCC1;ABC29;ABCC;GS-X;MRP;MRP1
Accession No.	Uniprot:P33527GenelD:4363
Uniprot	P33527
GenelD	4363
SDS-PAGE MW	170-220KDa
Concentration	1.0mg/ml
Formulation	PBS with 0.02% sodium azide,50% glycerol,pH7.3.
Storage	Store at -20°C. Avoid freeze / thaw cycles.

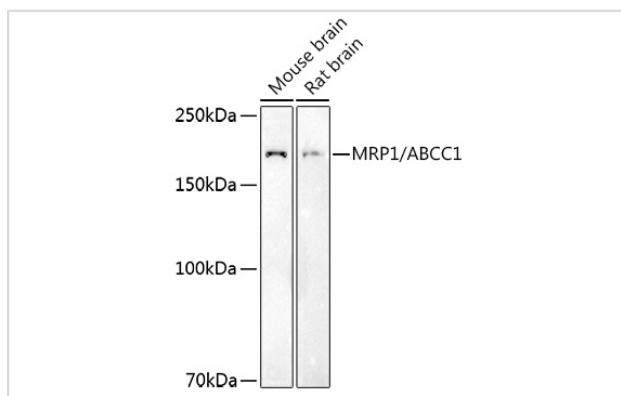
Application Details

WB □ 1:500 - 1:2000

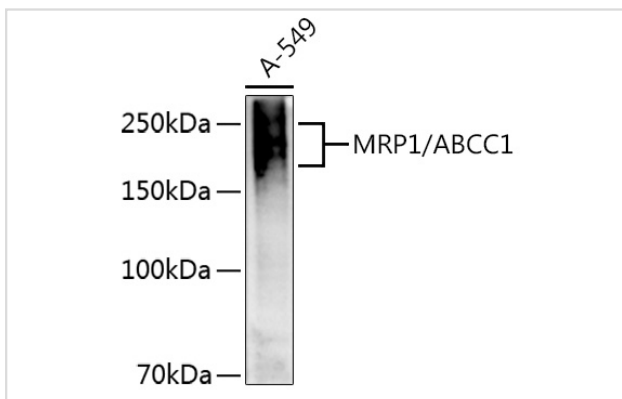
IHC □ 1:50 - 1:200

IF □ 1:50 - 1:200

Images



Western blot analysis of extracts of various cell lines, using MRP1/ABCC1 antibody.



Western blot analysis of extracts of A-549 cells, using MRP1/ABCC1 antibody.

Background

The protein encoded by this gene is a member of the superfamily of ATP-binding cassette (ABC) transporters. ABC proteins transport various molecules across extra- and intra-cellular membranes. ABC genes are divided into seven distinct subfamilies (ABC1, MDR/TAP, MRP, ALD, OABP, GCN20, White). This full transporter is a member of the MRP subfamily which is involved in multi-drug resistance. This protein functions as a multispecific organic anion transporter, with oxidized glutathione, cysteinyl leukotrienes, and activated aflatoxin B1 as substrates. This protein also transports glucuronides and sulfate conjugates of steroid hormones and bile salts. Alternatively spliced variants of this gene have been described but their full-length nature is unknown.

Note: This product is for in vitro research use only