

PAX2 antibody

Catalog No: #38561

Package Size: #38561-1 50ul #38561-2 100ul

Orders: order@signalwayantibody.comSupport: tech@signalwayantibody.com

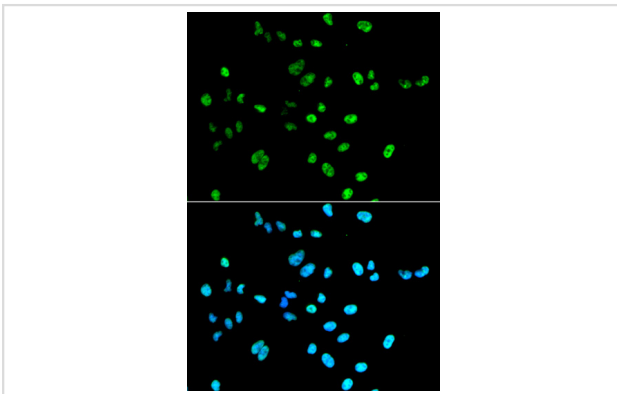
Description

Product Name	PAX2 antibody
Host Species	Rabbit
Clonality	Polyclonal
Isotype	IgG
Purification	Affinity purification
Applications	WB,IF
Species Reactivity	Human,Mouse,Rat
Specificity	The antibody detects endogenous level of total PAX2 protein.
Immunogen Type	Peptide
Immunogen Description	A synthetic peptide of human PAX2
Target Name	PAX2
Other Names	PAX2;FSGS7;PAPRS
Accession No.	Uniprot:Q02962GeneID:5076
Uniprot	Q02962
GeneID	5076
SDS-PAGE MW	47KDa
Concentration	1.0mg/ml
Formulation	PBS with 0.02% sodium azide,50% glycerol,pH7.3.
Storage	Store at -20°C. Avoid freeze / thaw cycles.

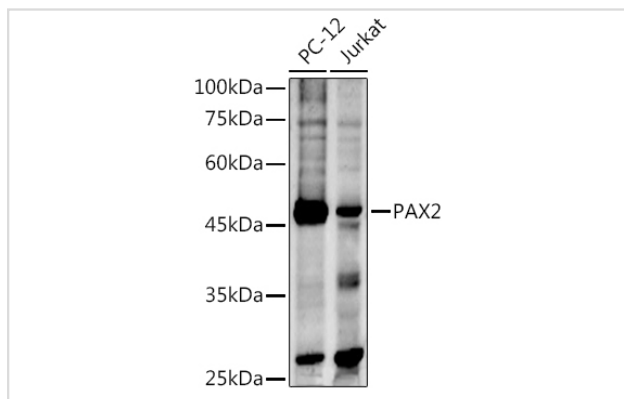
Application Details

WB \square 1:500 - 1:2000 IF \square 1:50 - 1:200

Images



Immunofluorescence analysis of A549 cells using PAX2 antibody.



Western blot analysis of extracts of various cell lines, using PAX2 antibody.

Background

PAX2 encodes paired box gene 2, one of many human homologues of the *Drosophila melanogaster* gene *prd*. The central feature of this transcription factor gene family is the conserved DNA-binding paired box domain. PAX2 is believed to be a target of transcriptional suppression by the tumor suppressor gene WT1. Mutations within PAX2 have been shown to result in optic nerve colobomas and renal hypoplasia. Alternative splicing of this gene results in multiple transcript variants.

Note: This product is for in vitro research use only