

RAD50 antibody

Catalog No: #38569

Package Size: #38569-1 50ul #38569-2 100ul

Orders: order@signalwayantibody.com

Support: tech@signalwayantibody.com

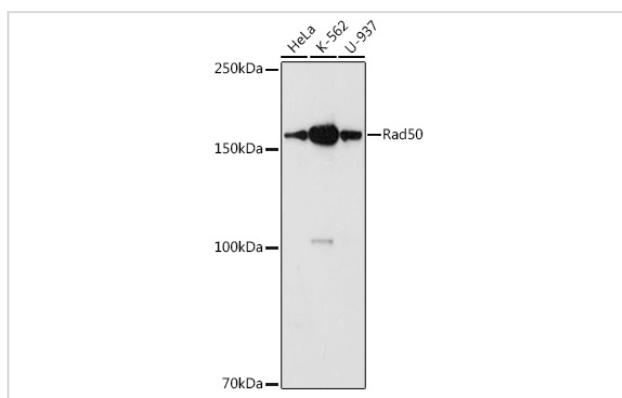
Description

Product Name	RAD50 antibody
Host Species	Rabbit
Clonality	Polyclonal
Isotype	IgG
Purification	Affinity purification
Applications	WB,IHC
Species Reactivity	Human,Mouse,Rat
Specificity	The antibody detects endogenous level of total RAD50 protein.
Immunogen Type	Peptide
Immunogen Description	A synthetic peptide of human Rad50 (NP_005723.2).
Target Name	RAD50
Other Names	RAD50;NBSLD;RAD502;hRad50
Accession No.	Uniprot:Q92878GeneID:10111
Uniprot	Q92878
GeneID	10111
SDS-PAGE MW	154KDa
Concentration	1.0mg/ml
Formulation	PBS with 0.02% sodium azide,50% glycerol,pH7.3.
Storage	Store at -20°C. Avoid freeze / thaw cycles.

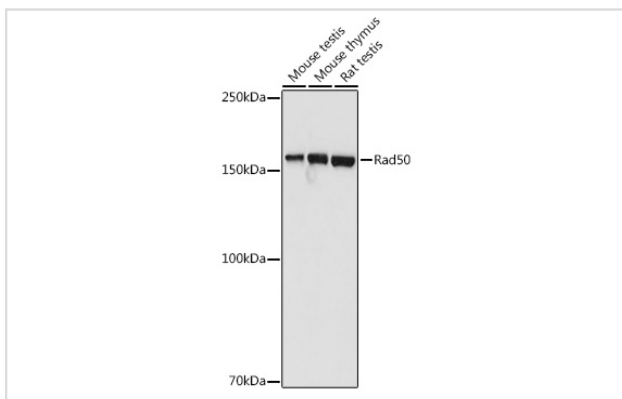
Application Details

WB □ 1:500 - 1:2000 IHC □ 1:50 - 1:200

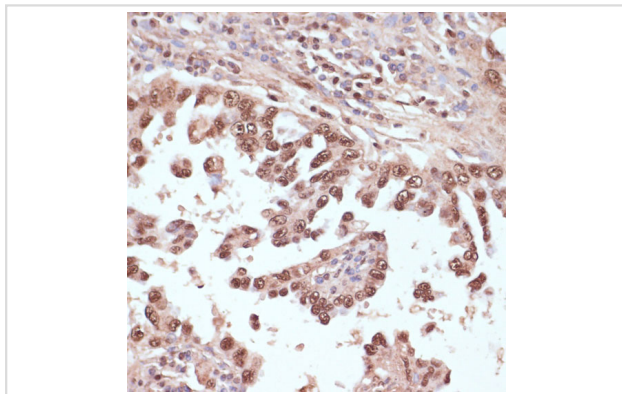
Images



Western blot analysis of extracts of various cell lines, using Rad50 antibody.



Western blot analysis of extracts of various cell lines, using Rad50 antibody.



Immunohistochemistry of paraffin-embedded human lung cancer using Rad50 antibody.

Background

The protein encoded by this gene is highly similar to *Saccharomyces cerevisiae* Rad50, a protein involved in DNA double-strand break repair. This protein forms a complex with MRE11 and NBS1. The protein complex binds to DNA and displays numerous enzymatic activities that are required for nonhomologous joining of DNA ends. This protein, cooperating with its partners, is important for DNA double-strand break repair, cell cycle checkpoint activation, telomere maintenance, and meiotic recombination. Knockout studies of the mouse homolog suggest this gene is essential for cell growth and viability. Mutations in this gene are the cause of Nijmegen breakage syndrome-like disorder.

Note: This product is for in vitro research use only