

SLC1A4 antibody

Catalog No: #38571

Package Size: #38571-1 50ul #38571-2 100ul

Orders: order@signalwayantibody.com

Support: tech@signalwayantibody.com

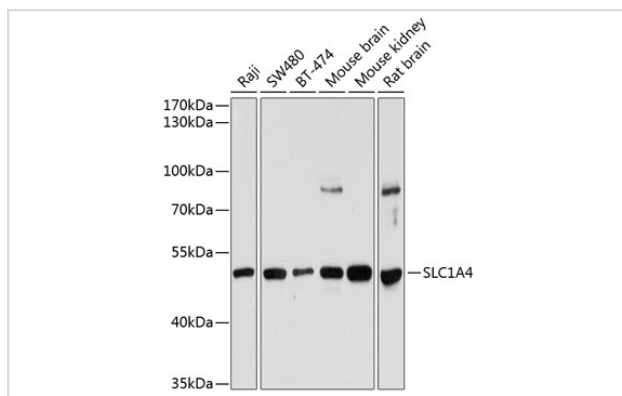
Description

Product Name	SLC1A4 antibody
Host Species	Rabbit
Clonality	Polyclonal
Isotype	IgG
Purification	Affinity purification
Applications	WB
Species Reactivity	Human,Mouse,Rat
Specificity	The antibody detects endogenous level of total SLC1A4 protein.
Immunogen Type	Peptide
Immunogen Description	Recombinant fusion protein of human SLC1A4 (NP_003029.2).
Target Name	SLC1A4
Other Names	SLC1A4;ASCT1;SATT;SPATCCM
Accession No.	Uniprot:P43007GenelD:6509
Uniprot	P43007
GenelD	6509
SDS-PAGE MW	53kDa
Concentration	1.0mg/ml
Formulation	PBS with 0.02% sodium azide,50% glycerol,pH7.3.
Storage	Store at -20°C. Avoid freeze / thaw cycles.

Application Details

WB □ 1:500 - 1:2000

Images



Western blot analysis of extracts of various cell lines, using SLC1A4 antibody.

Background

The protein encoded by this gene is a sodium-dependent neutral amino acid transporter for alanine, serine, cysteine, and threonine. Defects in this gene have been associated with developmental delay, microcephaly, and intellectual disability.

Note: This product is for in vitro research use only