

TRAF7 antibody

Catalog No: #38575

Package Size: #38575-1 50ul #38575-2 100ul

Orders: order@signalwayantibody.com

Support: tech@signalwayantibody.com

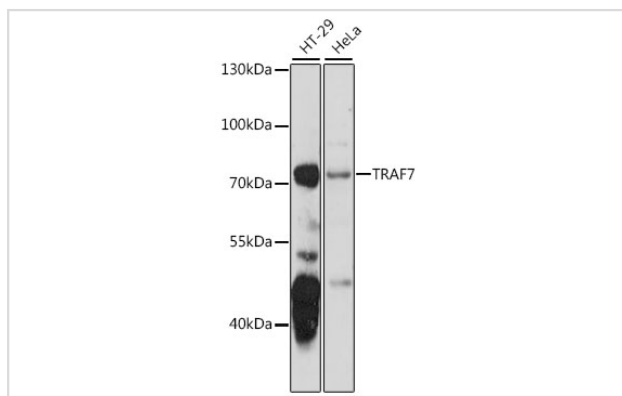
Description

Product Name	TRAF7 antibody
Host Species	Rabbit
Clonality	Polyclonal
Purification	Antibodies were purified by affinity purification using immunogen.
Applications	WB
Species Reactivity	Human
Specificity	The antibody detects endogenous level of total TRAF7 protein.
Immunogen Type	Peptide
Immunogen Description	A synthetic peptide of human TRAF7.
Target Name	TRAF7
Other Names	RFWD1; RNF119;
Accession No.	Swiss-Prot#: Q6Q0C0 NCBI Gene ID: 84231
Uniprot	Q6Q0C0
GeneID	84231;
SDS-PAGE MW	67kd
Concentration	1.0mg/ml
Formulation	Supplied at 1.0mg/mL in phosphate buffered saline (without Mg ²⁺ and Ca ²⁺), pH 7.4, 150mM NaCl, 0.02% sodium azide and 50% glycerol.
Storage	Store at -20°C

Application Details

WB 1:500 - 1:2000

Images



Western blot analysis of extracts of various cell lines, using TRAF7 at 1:1000 dilution.

Background

Tumor necrosis factor (TNF; see MIM 191160) receptor-associated factors, such as TRAF7, are signal transducers for members of the TNF receptor superfamily (see MIM 191190). TRAFs are composed of an N-terminal cysteine/histidine-rich region containing zinc RING and/or zinc finger motifs; a coiled-coil (leucine zipper) motif; and a homologous region that defines the TRAF family, the TRAF domain, which is involved in self-association and receptor binding.

Note: This product is for in vitro research use only