

NOTCH3 antibody

Catalog No: #38587

Package Size: #38587-1 50ul #38587-2 100ul

Orders: order@signalwayantibody.com

Support: tech@signalwayantibody.com

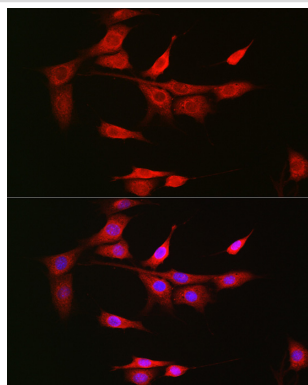
Description

Product Name	NOTCH3 antibody
Host Species	Rabbit
Clonality	Polyclonal
Isotype	IgG
Purification	Affinity purification
Applications	WB,IF
Species Reactivity	Human,Mouse,Rat
Specificity	The antibody detects endogenous level of total NOTCH3 protein.
Immunogen Type	Peptide
Immunogen Description	A synthetic peptide of human NOTCH3
Target Name	NOTCH3
Other Names	NOTCH3;CADASIL;CADASIL1;CASIL;IMF2;LMNS;notch 3
Accession No.	Uniprot:Q9UM47GeneID:4854
Uniprot	Q9UM47
GeneID	4854
SDS-PAGE MW	90kDa/280kDa
Concentration	1.0mg/ml
Formulation	PBS with 0.02% sodium azide,50% glycerol,pH7.3.
Storage	Store at -20°C. Avoid freeze / thaw cycles.

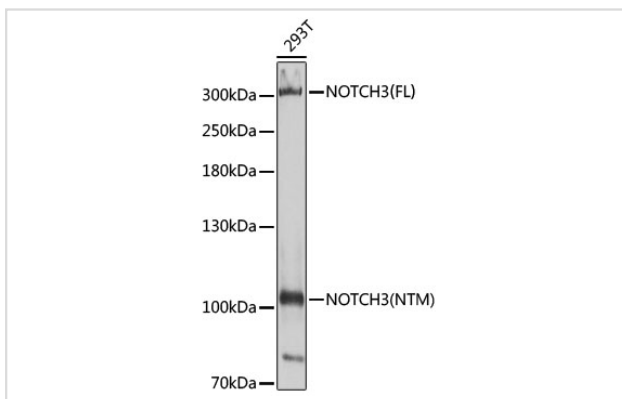
Application Details

WB \square 1:200 - 1:1000 IF \square 1:50 - 1:200

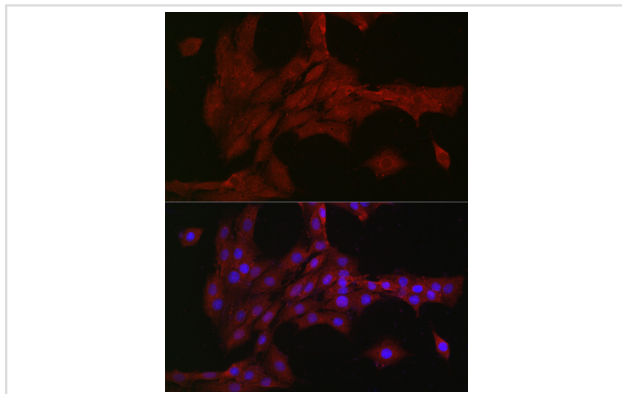
Images



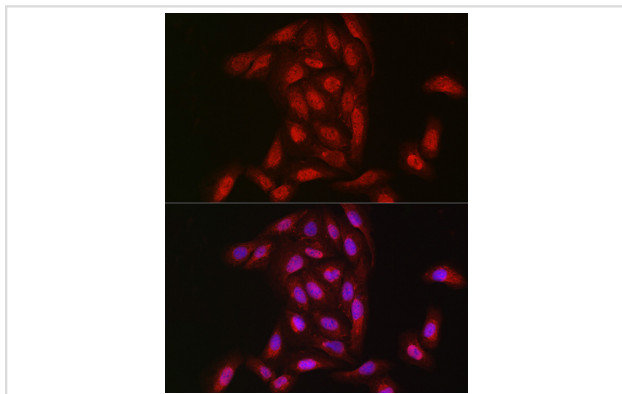
Immunofluorescence analysis of NIH/3T3 cells using NOTCH3 Rabbit pAb.



Western blot analysis of extracts of 293T cells, using NOTCH3 antibody.



Immunofluorescence analysis of PC-12 cells using NOTCH3 Rabbit pAb.



Immunofluorescence analysis of U2OS cells using NOTCH3 Rabbit pAb.

Background

This gene encodes the third discovered human homologue of the *Drosophila melanogaster* type I membrane protein notch. In *Drosophila*, notch interaction with its cell-bound ligands (delta, serrate) establishes an intercellular signalling pathway that plays a key role in neural development. Homologues of the notch-ligands have also been identified in human, but precise interactions between these ligands and the human notch homologues remains to be determined. Mutations in NOTCH3 have been identified as the underlying cause of cerebral autosomal dominant arteriopathy with subcortical infarcts and leukoencephalopathy (CADASIL).

Note: This product is for in vitro research use only