

## NPY1R antibody

Catalog No: #38588

Package Size: #38588-1 50ul #38588-2 100ul

Orders: [order@signalwayantibody.com](mailto:order@signalwayantibody.com)Support: [tech@signalwayantibody.com](mailto:tech@signalwayantibody.com)

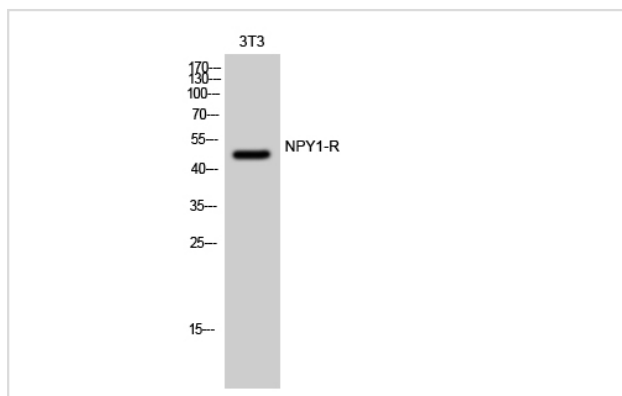
## Description

Product Name	NPY1R antibody
Host Species	Rabbit
Clonality	Polyclonal
Purification	Antibodies were purified by affinity purification using immunogen.
Applications	WB
Species Reactivity	Human,Mouse
Specificity	The antibody detects endogenous level of total NPY1R protein.
Immunogen Type	Peptide
Immunogen Description	A synthetic peptide of human NPY1R.
Target Name	NPY1R
Other Names	NPYR; NPY1-R
Accession No.	Swiss-Prot#: P25929NCBI Gene ID: 4886
Uniprot	P25929
GeneID	4886;
SDS-PAGE MW	44kd
Concentration	1.0mg/ml
Formulation	Supplied at 1.0mg/mL in phosphate buffered saline (without Mg <sup>2+</sup> and Ca <sup>2+</sup> ), pH 7.4, 150mM NaCl, 0.02% sodium azide and 50% glycerol.
Storage	Store at -20°C

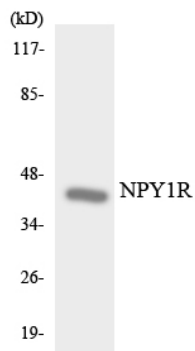
## Application Details

WB □ 1:500 - 1:2000

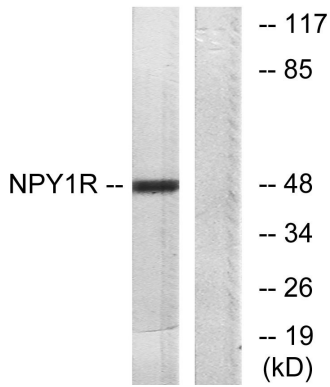
## Images



Western Blot analysis of 3T3 cells using NPY1-R Polyclonal Antibody



Western blot analysis of lysates from NIH/3T3 cells, using NPY1R Antibody. The lane on the right is blocked with the synthesized peptide.



Western blot analysis of the lysates from 293 cells using NPY1R antibody.

## Background

Neuropeptide Y (NPY; MIM 162640) is one of the most abundant neuropeptides in the mammalian nervous system and exhibits a diverse range of important physiologic activities, including effects on psychomotor activity, food intake, regulation of central endocrine secretion, and potent vasoactive effects on the cardiovascular system. Two major subtypes of NPY (Y1 and Y2) have been defined by pharmacologic criteria. NPY receptors, such as NPY1R, have been identified in a variety of tissues, including brain, spleen, small intestine, kidney, testis, placenta, and aortic smooth muscle.

Note: This product is for in vitro research use only