

## SCTR antibody

Catalog No: #38595

Package Size: #38595-1 50ul #38595-2 100ul

Orders: order@signalwayantibody.com

Support: tech@signalwayantibody.com

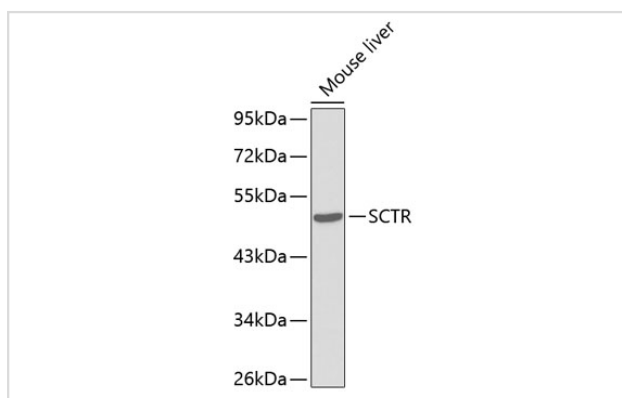
## Description

Product Name	SCTR antibody
Host Species	Rabbit
Clonality	Polyclonal
Purification	Antibodies were purified by affinity purification using immunogen.
Applications	WB,IF
Species Reactivity	Human,Mouse
Specificity	The antibody detects endogenous level of total SCTR protein.
Immunogen Type	Peptide
Immunogen Description	A synthetic peptide of human SCTR.
Target Name	SCTR
Other Names	SR
Accession No.	Swiss-Prot#: P47872NCBI Gene ID: 6344
Uniprot	P47872
GeneID	6344;
SDS-PAGE MW	50kd
Concentration	1.0mg/ml
Formulation	Supplied at 1.0mg/mL in phosphate buffered saline (without Mg <sup>2+</sup> and Ca <sup>2+</sup> ), pH 7.4, 150mM NaCl, 0.02% sodium azide and 50% glycerol.
Storage	Store at -20°C

## Application Details

WB □ 1:500 - 1:2000IF □ 1:50 - 1:100

## Images



Western blot analysis of extracts of mouse liver, using SCTR .

## Background

---

The protein encoded by this gene is a G protein-coupled receptor and belongs to the glucagon-VIP-secretin receptor family. It binds secretin which is the most potent regulator of pancreatic bicarbonate, electrolyte and volume secretion. Secretin and its receptor are suggested to be involved in pancreatic cancer and autism.

---

Note: This product is for in vitro research use only