

SLC32A1 antibody

Catalog No: #38597

Package Size: #38597-1 50ul #38597-2 100ul

Orders: order@signalwayantibody.com

Support: tech@signalwayantibody.com

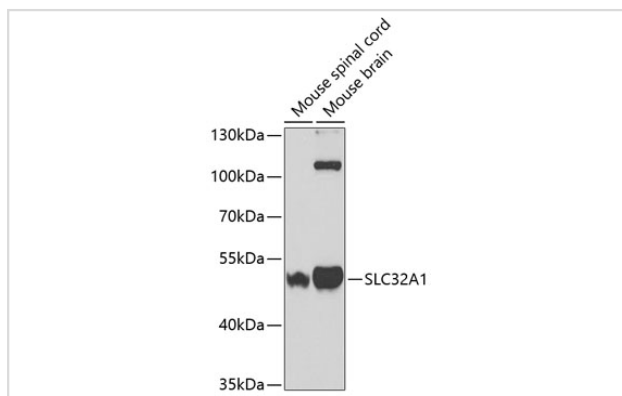
Description

Product Name	SLC32A1 antibody
Host Species	Rabbit
Clonality	Polyclonal
Isotype	IgG
Purification	Affinity purification
Applications	WB
Species Reactivity	Human,Mouse,Rat
Specificity	The antibody detects endogenous level of total SLC32A1 protein.
Immunogen Type	Peptide
Immunogen Description	Recombinant protein of human SLC32A1
Target Name	SLC32A1
Other Names	SLC32A1;VGAT;VIAAT
Accession No.	Uniprot:Q9H598GeneID:140679
Uniprot	Q9H598
GeneID	140679
SDS-PAGE MW	53kDa
Concentration	1.0mg/ml
Formulation	PBS with 0.02% sodium azide,50% glycerol,pH7.3.
Storage	Store at -20°C. Avoid freeze / thaw cycles.

Application Details

WB 1:1000 - 1:2000

Images



Western blot analysis of extracts of various cell lines, using SLC32A1 antibody.

Background

The protein encoded by this gene is an integral membrane protein involved in gamma-aminobutyric acid (GABA) and glycine uptake into synaptic vesicles. The encoded protein is a member of amino acid/polyamine transporter family II.

Note: This product is for in vitro research use only