

SFTPA1 antibody

Catalog No: #38598

Package Size: #38598-1 50ul #38598-2 100ul

Orders: order@signalwayantibody.com

Support: tech@signalwayantibody.com

Description

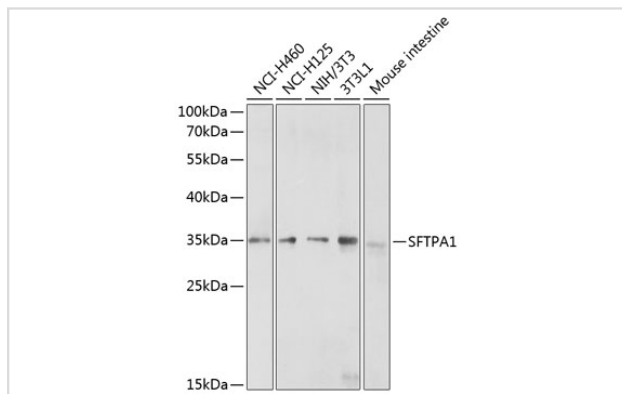
Product Name	SFTPA1 antibody
Host Species	Rabbit
Clonality	Polyclonal
Purification	Antibodies were purified by affinity purification using immunogen.
Applications	WB,IHC
Species Reactivity	Human,Mouse,Rat
Specificity	The antibody detects endogenous level of total SFTPA1 protein.
Immunogen Type	Peptide
Immunogen Description	A synthetic peptide of human SFTPA1.
Target Name	SFTPA1
Other Names	SPA; PSAP; PSPA; SP-A; SPA1; PSP-A; SFTP1; SP-A1; COLEC4; SFTPA1B
Accession No.	Swiss-Prot#: Q8IWL2NCBI Gene ID: 653509
Uniprot	Q8IWL2
GeneID	653509;
SDS-PAGE MW	28kd
Concentration	1.0mg/ml
Formulation	Supplied at 1.0mg/mL in phosphate buffered saline (without Mg ²⁺ and Ca ²⁺), pH 7.4, 150mM NaCl, 0.02% sodium azide and 50% glycerol.
Storage	Store at -20°C

Application Details

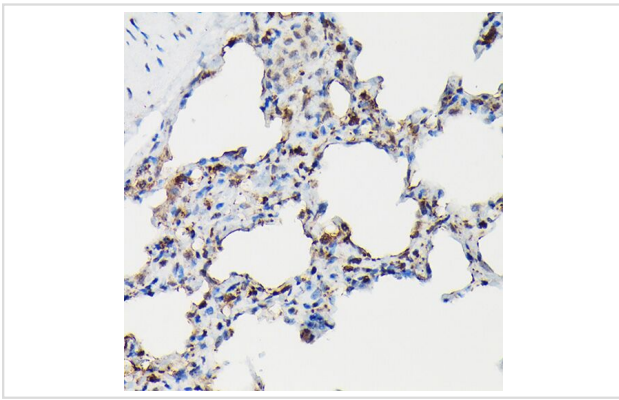
WB 1:500 - 1:1000

IHC 1:50 - 1:100

Images



Western blot analysis of extracts of various cell lines, using SFTPA1 at 1:200 dilution.



Immunohistochemistry of paraffin-embedded human lung cancer using SFTPA1 Rabbit pAb at dilution of 1:50 (40x lens).

Background

This gene encodes a lung surfactant protein that is a member of a subfamily of C-type lectins called collectins. The encoded protein binds specific carbohydrate moieties found on lipids and on the surface of microorganisms. This protein plays an essential role in surfactant homeostasis and in the defense against respiratory pathogens. Mutations in this gene are associated with idiopathic pulmonary fibrosis. Alternate splicing results in multiple transcript variants.?

Note: This product is for in vitro research use only