

## SSTR2 antibody

Catalog No: #38600

Package Size: #38600-1 50ul #38600-2 100ul

Orders: order@signalwayantibody.com

Support: tech@signalwayantibody.com

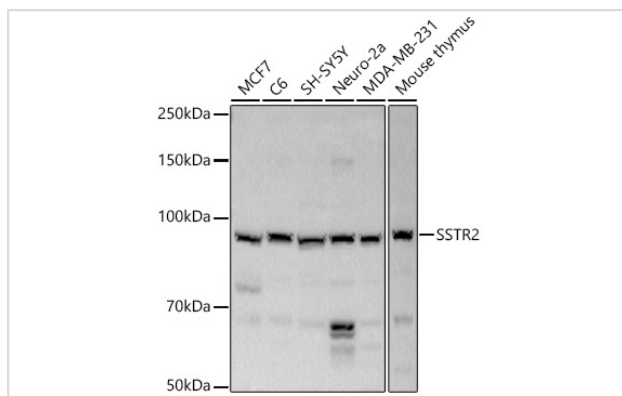
## Description

Product Name	SSTR2 antibody
Host Species	Rabbit
Clonality	Polyclonal
Isotype	IgG
Purification	Affinity purification
Applications	WB,IHC
Species Reactivity	Human,Mouse,Rat
Specificity	The antibody detects endogenous level of total SSTR2 protein.
Immunogen Type	Peptide
Immunogen Description	A synthetic peptide of human SSTR2 (NP_001041.1).
Target Name	SSTR2
Other Names	SSTR2;somatostatin receptor 2;SS 2 R;SS2R;SRIF 1;SS2 R;SRIF-1
Accession No.	Uniprot:P30874GeneID:6752
Uniprot	P30874
GeneID	6752
SDS-PAGE MW	87KDa
Concentration	1.0mg/ml
Formulation	PBS with 0.02% sodium azide,50% glycerol,pH7.3.
Storage	Store at -20°C. Avoid freeze / thaw cycles.

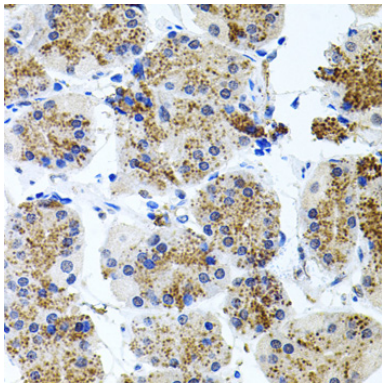
## Application Details

WB 1:500 - 1:1000 IHC 1:50 - 1:100

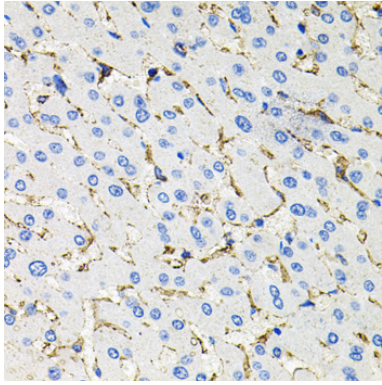
## Images



Western blot analysis of extracts of various cell lines, using SSTR2 antibody.



Immunohistochemistry of paraffin-embedded human stomach using SSTR2 antibody.



Immunohistochemistry of paraffin-embedded human liver damage using SSTR2 antibody.

## Background

Somatostatin acts at many sites to inhibit the release of many hormones and other secretory proteins. The biologic effects of somatostatin are probably mediated by a family of G protein-coupled receptors that are expressed in a tissue-specific manner. SSTR2 is a member of the superfamily of receptors having seven transmembrane segments and is expressed in highest levels in cerebrum and kidney.

Note: This product is for in vitro research use only