

CSF2RA antibody

Catalog No: #38609

Package Size: #38609-1 50ul #38609-2 100ul

Orders: order@signalwayantibody.com

Support: tech@signalwayantibody.com

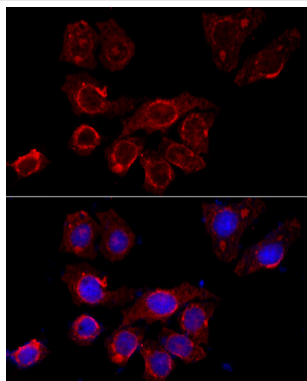
Description

Product Name	CSF2RA antibody
Host Species	Rabbit
Clonality	Polyclonal
Purification	Antibodies were purified by affinity purification using immunogen.
Applications	IF
Species Reactivity	Human, Mouse
Specificity	The antibody detects endogenous level of total CSF2RA protein.
Immunogen Type	Recombinant Protein
Immunogen Description	Recombinant protein of human CSF2RA.
Target Name	CSF2RA
Other Names	GMR; CD116; CSF2R; SMDP4; CDw116; CSF2RX; CSF2RY; GMCSFR; CSF2RAX; CSF2RAY; GM-CSF-R-alpha;
Accession No.	Swiss-Prot#: P15509 NCBI Gene ID: 1438
Uniprot	P15509
GeneID	1438;
SDS-PAGE MW	46kd
Concentration	1.0mg/ml
Formulation	Supplied at 1.0mg/mL in phosphate buffered saline (without Mg ²⁺ and Ca ²⁺), pH 7.4, 150mM NaCl, 0.02% sodium azide and 50% glycerol.
Storage	Store at -20°C

Application Details

IF □ 1:50 - 1:200

Images



Immunofluorescence analysis of HeLa cells using CSF2RA at dilution of 1:100 (40x lens). Blue: DAPI for nuclear staining.

Background

The protein encoded by this gene is the alpha subunit of the heterodimeric receptor for colony stimulating factor 2, a cytokine which controls the production, differentiation, and function of granulocytes and macrophages. The encoded protein is a member of the cytokine family of receptors. This gene is found in the pseudoautosomal region (PAR) of the X and Y chromosomes. Multiple transcript variants encoding different isoforms have been found for this gene, with some of the isoforms being membrane-bound and others being soluble.

Note: This product is for in vitro research use only