

CUL3 antibody

Catalog No: #38610

Package Size: #38610-1 50ul #38610-2 100ul

Orders: order@signalwayantibody.com

Support: tech@signalwayantibody.com

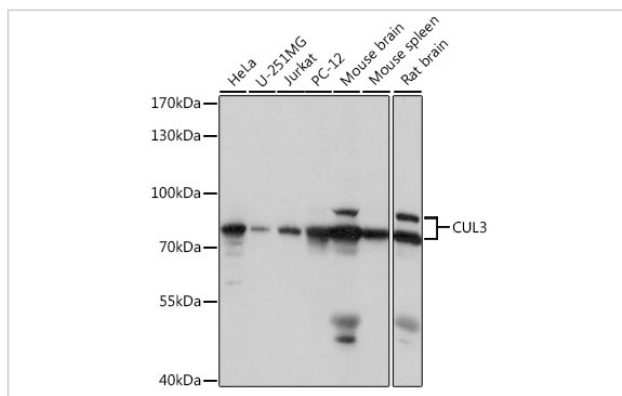
Description

Product Name	CUL3 antibody
Host Species	Rabbit
Clonality	Polyclonal
Purification	Antibodies were purified by affinity purification using immunogen.
Applications	WB,IHC,IF
Species Reactivity	Human,Mouse,Rat
Specificity	The antibody detects endogenous level of total CUL3 protein.
Immunogen Type	Recombinant Protein
Immunogen Description	Recombinant protein of human CUL3.
Target Name	CUL3
Other Names	CUL-3; PHA2E;
Accession No.	Swiss-Prot#: Q13618NCBI Gene ID: 8452
Uniprot	Q13618
GeneID	8452;
SDS-PAGE MW	89kd
Concentration	1.0mg/ml
Formulation	Supplied at 1.0mg/mL in phosphate buffered saline (without Mg ²⁺ and Ca ²⁺), pH 7.4, 150mM NaCl, 0.02% sodium azide and 50% glycerol.
Storage	Store at -20°C

Application Details

WB □ 1:500 - 1:2000 IHC □ 1:50 - 1:200 IF □ 1:50 - 1:200

Images



Western blot analysis of extracts of various cell lines, using CUL3 at 1:1000 dilution.

Background

This gene encodes a member of the cullin protein family. The encoded protein plays a critical role in the polyubiquitination and subsequent degradation of specific protein substrates as the core component and scaffold protein of an E3 ubiquitin ligase complex. Complexes including the encoded protein may also play a role in late endosome maturation. Mutations in this gene are a cause of type 2E pseudohypoaldosteronism. Alternatively spliced transcript variants encoding multiple isoforms have been observed for this gene. [provided by RefSeq, Mar 2012]

Note: This product is for in vitro research use only