

GSK3B antibody

Catalog No: #38616

Package Size: #38616-1 50ul #38616-2 100ul

Orders: order@signalwayantibody.com

Support: tech@signalwayantibody.com

Description

Product Name	GSK3B antibody
Host Species	Rabbit
Clonality	Polyclonal
Isotype	IgG
Purification	The antibody was affinity-purified from rabbit antiserum by affinity-chromatography using epitope-specific immunogen.
Applications	IF WB IHC IP
Species Reactivity	Human Mouse Rat
Specificity	The antibody detects endogenous level of total GSK3B protein.
Immunogen Type	Peptide
Immunogen Description	The antiserum was produced against synthesized peptide derived from human GSK3B.
Target Name	GSK3B
Other Names	GSK3B;gsk-3 α / β
Accession No.	Uniprot:P49841GenelD:2932
Uniprot	P49841
GenelD	2932
SDS-PAGE MW	46kDa
Concentration	1.0mg/ml
Formulation	Liquid in PBS containing 50% glycerol, 0.5% BSA and 0.02% sodium azide.
Storage	Store at -20°C. Avoid freeze / thaw cycles.

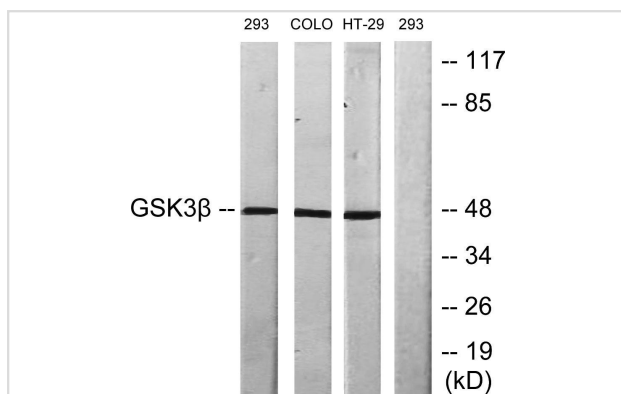
Application Details

IF 1:50-200

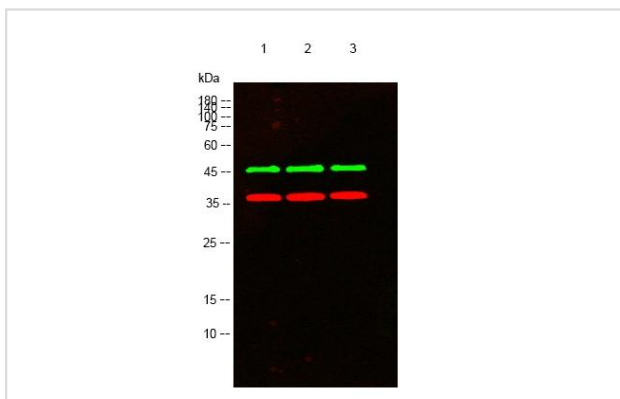
WB 1:500-1:2000

IHC 1:100-1:300

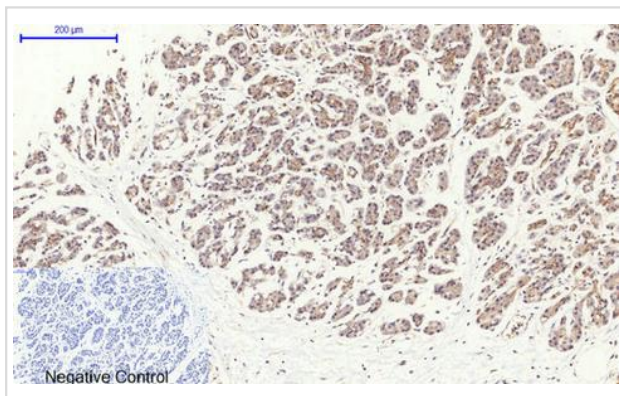
Images



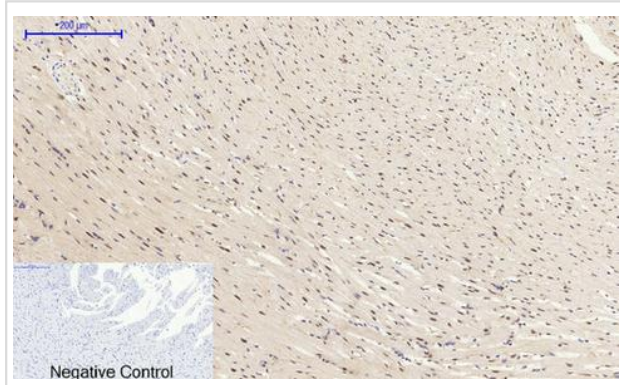
Western blot analysis of lysates from 293, COLO205, and HT29 cells, using GSK3 beta Antibody. The lane on the right is blocked with the synthesized peptide.



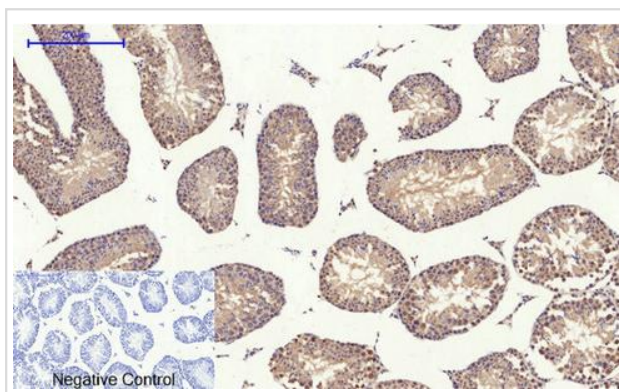
Western blot analysis of lysates from 1) 3T3, 2) HT29, 3) 293 cells, (Green) primary antibody was diluted at 1:1000 (Red) GAPDH antibody was diluted at 1:5000



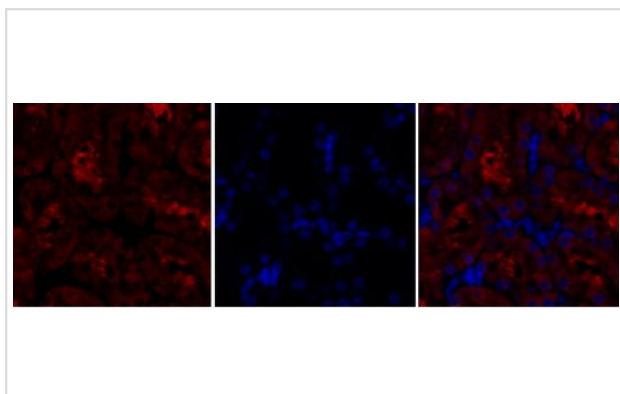
Immunohistochemical analysis of paraffin-embedded Human-stomach-cancer tissue. 1,GSK3 β Polyclonal Antibody was diluted at 1:200(4°C,overnight). 2, Sodium citrate pH 6.0 was used for antibody retrieval(>98°C,20min). 3,Secondary antibody was diluted at 1:200(room tempeRature, 30min). Negative control was used by secondary antibody only.



Immunohistochemical analysis of paraffin-embedded Rat-heart tissue. 1,GSK3 β Polyclonal Antibody was diluted at 1:200(4°C,overnight). 2, Sodium citrate pH 6.0 was used for antibody retrieval(>98°C,20min). 3,Secondary antibody was diluted at 1:200(room tempeRature, 30min). Negative control was used by secondary antibody only.



Immunohistochemical analysis of paraffin-embedded Mouse-testis tissue. 1,GSK3 β Polyclonal Antibody was diluted at 1:200(4°C,overnight). 2, Sodium citrate pH 6.0 was used for antibody retrieval(>98°C,20min). 3,Secondary antibody was diluted at 1:200(room tempeRature, 30min). Negative control was used by secondary antibody only.



Immunofluorescence analysis of rat-kidney tissue. 1,GSK3 β Polyclonal Antibody(red) was diluted at 1:200(4°C,overnight). 2, Cy3 labeled Secondary antibody was diluted at 1:300(room temperature, 50min).3, Picture B: DAPI(blue) 10min. Picture A:Target. Picture B: DAPI. Picture C: merge of A+B

Background

The protein encoded by this gene is a serine-threonine kinase, belonging to the glycogen synthase kinase subfamily. It is involved in energy metabolism, neuronal cell development, and body pattern formation. Polymorphisms in this gene have been implicated in modifying risk of Parkinson disease, and studies in mice show that overexpression of this gene may be relevant to the pathogenesis of Alzheimer disease. Alternatively spliced transcript variants encoding different isoforms have been found for this gene.

Note: This product is for in vitro research use only