

NTF3 antibody

Catalog No: #38620

Package Size: #38620-1 50ul #38620-2 100ul

Orders: order@signalwayantibody.com

Support: tech@signalwayantibody.com

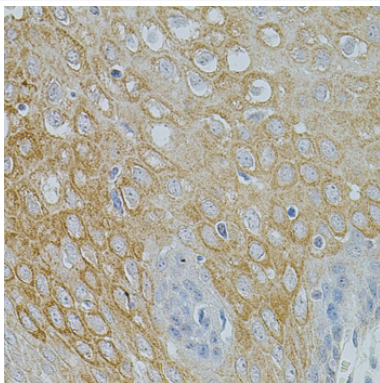
Description

Product Name	NTF3 antibody
Host Species	Rabbit
Clonality	Polyclonal
Purification	Antibodies were purified by affinity purification using immunogen.
Applications	WB,IHC
Species Reactivity	Human,Mouse
Specificity	The antibody detects endogenous level of total NTF3 protein.
Immunogen Type	Recombinant Protein
Immunogen Description	Recombinant protein of human NTF3.
Target Name	NTF3
Other Names	NT3; HDNF; NGF2; NGF-2
Accession No.	Swiss-Prot#: P20783NCBI Gene ID: 4908
Uniprot	P20783
GeneID	4908;
SDS-PAGE MW	31kd
Concentration	1.0mg/ml
Formulation	Supplied at 1.0mg/mL in phosphate buffered saline (without Mg ²⁺ and Ca ²⁺), pH 7.4, 150mM NaCl, 0.02% sodium azide and 50% glycerol.
Storage	Store at -20°C

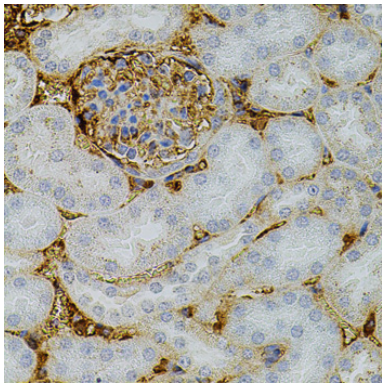
Application Details

WB 1:500 - 1:1000 IHC 1:100 - 1:200

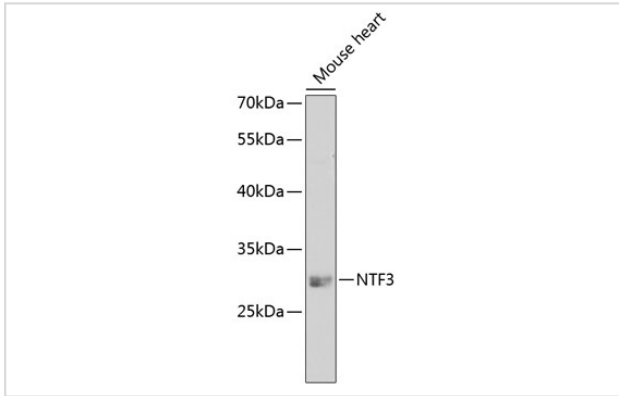
Images



Immunohistochemistry of paraffin-embedded human esophagus using NTF3 at dilution of 1:100 (40x lens).



Immunohistochemistry of paraffin-embedded mouse kidney using NTF3 at dilution of 1:100 (40x lens).



Western blot analysis of extracts of mouse heart, using NTF3 at 1:250 dilution.

Background

The protein encoded by this gene is a member of the neurotrophin family, that controls survival and differentiation of mammalian neurons. This protein is closely related to both nerve growth factor and brain-derived neurotrophic factor. It may be involved in the maintenance of the adult nervous system, and may affect development of neurons in the embryo when it is expressed in human placenta. NTF3-deficient mice generated by gene targeting display severe movement defects of the limbs. The mature peptide of this protein is identical in all mammals examined including human, pig, rat and mouse.

Note: This product is for in vitro research use only