

Cytochrome C Antibody

Catalog No: #21680

Package Size: #21680-1 50ul #21680-2 100ul

Orders: order@signalwayantibody.com

Support: tech@signalwayantibody.com

Description

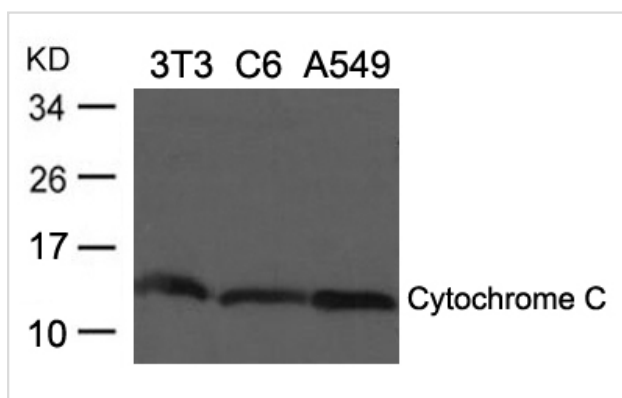
Product Name	Cytochrome C Antibody
Host Species	Rabbit
Clonality	Polyclonal
Applications	WB
Species Reactivity	Hu Ms Rt
Specificity	The antibody detects endogenous level of total Cytochrome C protein.
Immunogen Type	Peptide-KLH
Immunogen Description	Peptide sequence around aa.71-75(N-P-K-K-Y) derived from Human Cytochrome C.
Target Name	Cytochrome C
Other Names	CYC, HCS, THC4,
Accession No.	Swiss-Prot:P99999Gene ID:54205
Uniprot	P99999
GeneID	54205;
Concentration	1.0mg/ml

Application Details

Predicted MW: 14kd

Western blotting: 1: 500~1: 1000

Images



Western blot analysis of extracts from 3T3, C6 and A549 cells using Cytochrome C Antibody #21680.

Background

Electron carrier protein. The oxidized form of the cytochrome c heme group can accept an electron from the heme group of the cytochrome c1 subunit of cytochrome reductase. Cytochrome c then transfers this electron to the cytochrome oxidase complex, the final protein carrier in the mitochondrial electron-transport chain.

Plays a role in apoptosis. Suppression of the anti-apoptotic members or activation of the pro-apoptotic members of the Bcl-2 family leads to altered

mitochondrial membrane permeability resulting in release of cytochrome c into the cytosol. Binding of cytochrome c to Apaf-1 triggers the activation of caspase-9, which then accelerates apoptosis by activating other caspases.

Note: This product is for in vitro research use only