

Map2 antibody

Catalog No: #38634

Package Size: #38634-1 50ul #38634-2 100ul

Orders: order@signalwayantibody.comSupport: tech@signalwayantibody.com

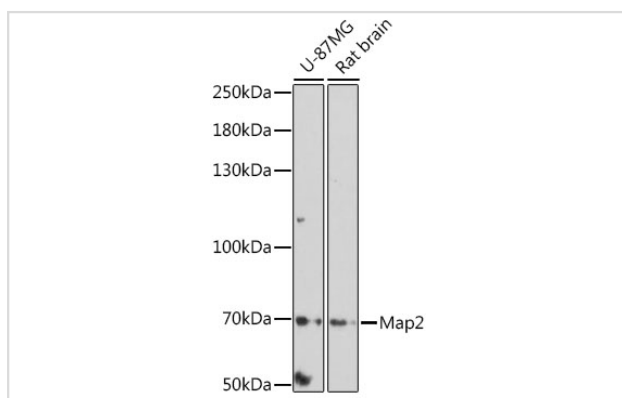
Description

Product Name	Map2 antibody
Host Species	Rabbit
Clonality	Polyclonal
Purification	Antibodies were purified by affinity purification using immunogen.
Applications	WB,IHC
Species Reactivity	Human,Mouse,Rat
Specificity	The antibody detects endogenous level of total Map2 protein.
Immunogen Type	Recombinant Protein
Immunogen Description	Recombinant protein of human Map2.
Target Name	Map2
Other Names	MAP2A; MAP2B; MAP2C
Accession No.	Swiss-Prot#: P11137NCBI Gene ID: 4133
Uniprot	P11137
GeneID	4133;
SDS-PAGE MW	200kd
Concentration	1.0mg/ml
Formulation	Supplied at 1.0mg/mL in phosphate buffered saline (without Mg ²⁺ and Ca ²⁺), pH 7.4, 150mM NaCl, 0.02% sodium azide and 50% glycerol.
Storage	Store at -20°C

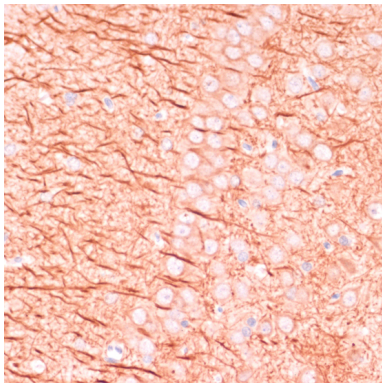
Application Details

WB □ 1:500 - 1:2000 IHC □ 1:50 - 1:200

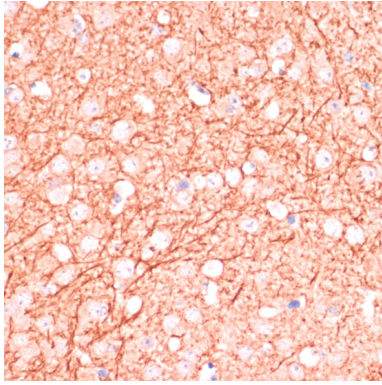
Images



Western blot analysis of extracts of various cell lines, using Map2 at 1:1000 dilution.



Immunohistochemistry of paraffin-embedded rat brain using Map2 at dilution of 1:100 (40x lens).



Immunohistochemistry of paraffin-embedded mouse brain using Map2 at dilution of 1:100 (40x lens).

Background

This gene encodes a protein that belongs to the microtubule-associated protein family. The proteins of this family are thought to be involved in microtubule assembly, which is an essential step in neurogenesis. The products of similar genes in rat and mouse are neuron-specific cytoskeletal proteins that are enriched in dendrites, implicating a role in determining and stabilizing dendritic shape during neuron development. A number of alternatively spliced variants encoding distinct isoforms have been described.

Note: This product is for in vitro research use only