

Snail antibody

Catalog No: #38667

Package Size: #38667-1 50ul #38667-2 100ul

Orders: order@signalwayantibody.comSupport: tech@signalwayantibody.com

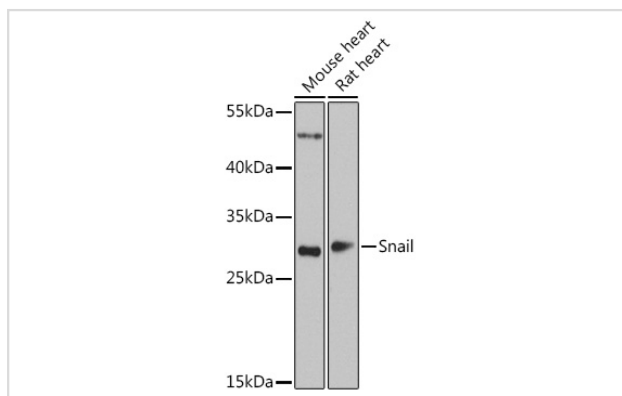
Description

Product Name	Snail antibody
Host Species	Rabbit
Clonality	Polyclonal
Isotype	IgG
Purification	Affinity purification
Applications	WB,IHC
Species Reactivity	Human,Mouse,Rat
Specificity	The antibody detects endogenous level of total Snail protein.
Immunogen Type	Recombinant Protein
Immunogen Description	A synthetic peptide of human Snail (NP_005976.2).
Target Name	Snail
Other Names	SNAI1;SLUGH2;SNA;SNAH;SNAIL;SNAIL1;dJ710H13.1
Accession No.	Uniprot:O95863GeneID:6615
Uniprot	O95863
GeneID	6615
SDS-PAGE MW	29kDa
Concentration	1.0mg/ml
Formulation	PBS with 0.02% sodium azide,50% glycerol,pH7.3.
Storage	Store at -20°C. Avoid freeze / thaw cycles.

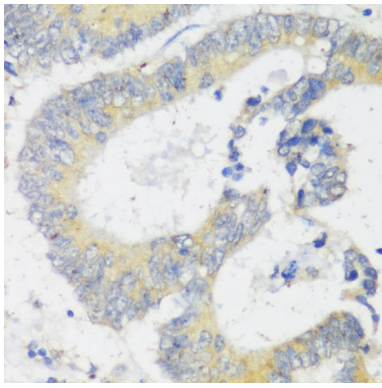
Application Details

WB 1:500 - 1:2000 IHC 1:50 - 1:100

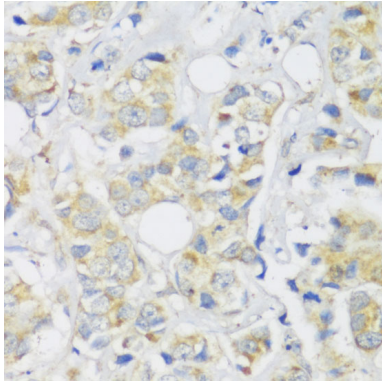
Images



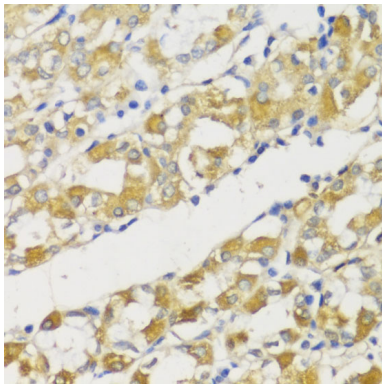
Western blot analysis of extracts of various cell lines, using Snail antibody.



Immunohistochemistry of paraffin-embedded human colon carcinoma using Snail antibody.



Immunohistochemistry of paraffin-embedded human breast cancer using Snail antibody.



Immunohistochemistry of paraffin-embedded human stomach using Snail antibody.

Background

The *Drosophila* embryonic protein snail is a zinc finger transcriptional repressor which downregulates the expression of ectodermal genes within the mesoderm. The nuclear protein encoded by this gene is structurally similar to the *Drosophila* snail protein, and is also thought to be critical for mesoderm formation in the developing embryo. At least two variants of a similar processed pseudogene have been found on chromosome 2.

Note: This product is for in vitro research use only