

FZR1 antibody

Catalog No: #38668

Package Size: #38668-1 50ul #38668-2 100ul

Orders: order@signalwayantibody.com

Support: tech@signalwayantibody.com

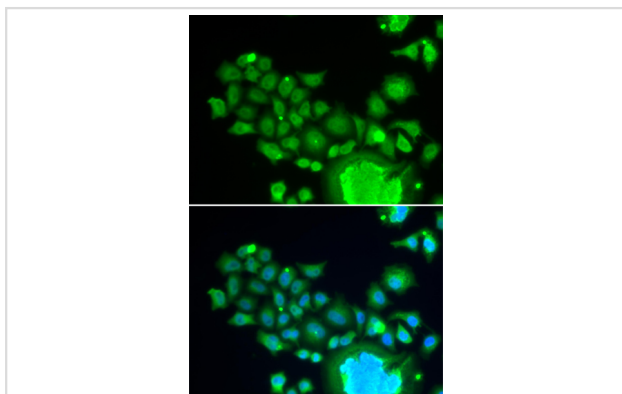
Description

Product Name	FZR1 antibody
Host Species	Rabbit
Clonality	Polyclonal
Purification	Antibodies were purified by affinity purification using immunogen.
Applications	WB,IF
Species Reactivity	Human,Mouse
Specificity	The antibody detects endogenous level of total FZR1 protein.
Immunogen Type	Recombinant Protein
Immunogen Description	Recombinant protein of human FZR1.
Target Name	FZR1
Other Names	FZR; CDH1; FZR2; HCDH; HCDH1; CDC20C;
Accession No.	Swiss-Prot#: Q9UM11NCBI Gene ID: 51343
Uniprot	Q9UM11
GeneID	51343;
SDS-PAGE MW	55kd
Concentration	1.0mg/ml
Formulation	Supplied at 1.0mg/mL in phosphate buffered saline (without Mg ²⁺ and Ca ²⁺), pH 7.4, 150mM NaCl, 0.02% sodium azide and 50% glycerol.
Storage	Store at -20°C

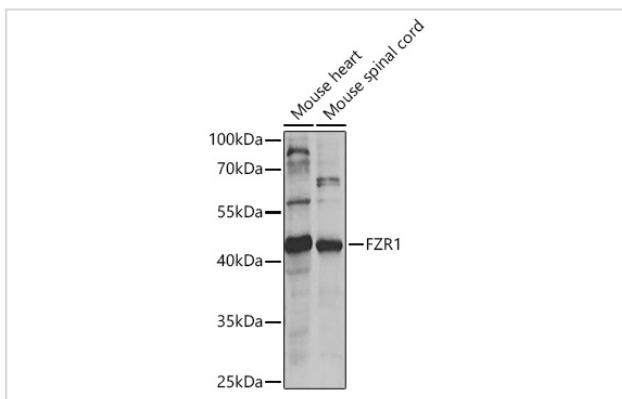
Application Details

WB □ 1:500 - 1:2000IF □ 1:50 - 1:200

Images



Immunofluorescence analysis of HeLa cells using FZR1 .
Blue: DAPI for nuclear staining.



Western blot analysis of extracts of various cell lines, using FZR1 at 1:1000 dilution.

Background

Key regulator of ligase activity of the anaphase promoting complex/cyclosome (APC/C), which confers substrate specificity upon the complex. Associates with the APC/C in late mitosis, in replacement of CDC20, and activates the APC/C during anaphase and telophase. The APC/C remains active in degrading substrates to ensure that positive regulators of the cell cycle do not accumulate prematurely. At the G1/S transition FZR1 is phosphorylated, leading to its dissociation from the APC/C. Following DNA damage, it is required for the G2 DNA damage checkpoint: its dephosphorylation and reassociation with the APC/C leads to the ubiquitination of PLK1, preventing entry into mitosis.

Note: This product is for in vitro research use only