

ZEB1 antibody

Catalog No: #38675

Package Size: #38675-1 50ul #38675-2 100ul

Orders: order@signalwayantibody.comSupport: tech@signalwayantibody.com

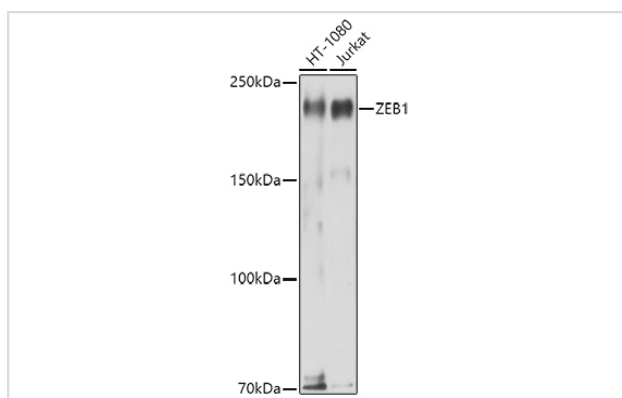
Description

Product Name	ZEB1 antibody
Host Species	Rabbit
Clonality	Polyclonal
Isotype	IgG
Purification	Affinity purification
Applications	WB,IHC
Species Reactivity	Human,Mouse,Rat
Specificity	The antibody detects endogenous level of total ZEB1 protein.
Immunogen Type	Recombinant Protein
Immunogen Description	Recombinant fusion protein of human ZEB1 (NP_001167567.1).
Target Name	ZEB1
Other Names	ZEB1;AREB6;BZP;DELTAEF1;FECD6;NIL2A;PPCD3;TCF8;ZFHEP;ZFHX1A
Accession No.	Uniprot:P37275GeneID:6935
Uniprot	P37275
GeneID	6935
SDS-PAGE MW	200KDa
Concentration	1.0mg/ml
Formulation	PBS with 0.02% sodium azide,50% glycerol,pH7.3.
Storage	Store at -20°C. Avoid freeze / thaw cycles.

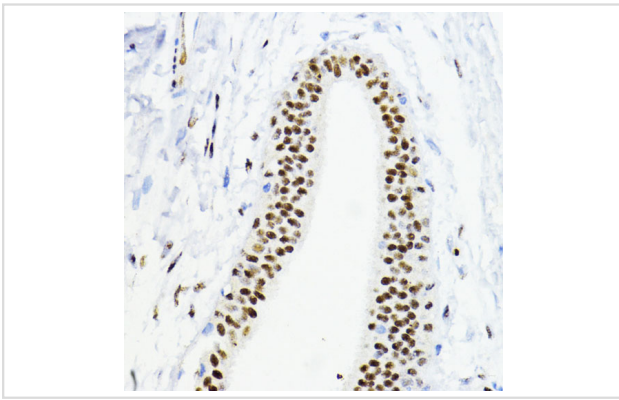
Application Details

WB 1:500 - 1:2000 IHC 1:50 - 1:200

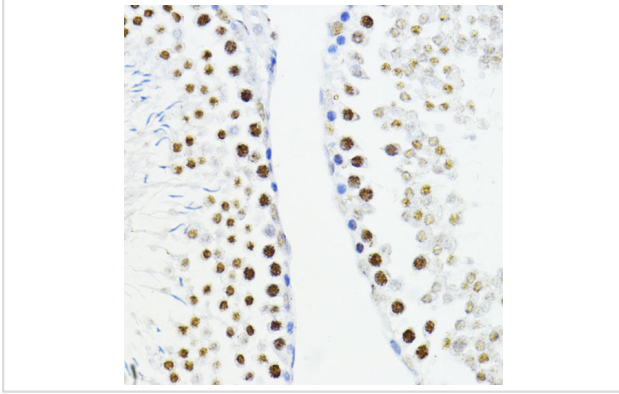
Images



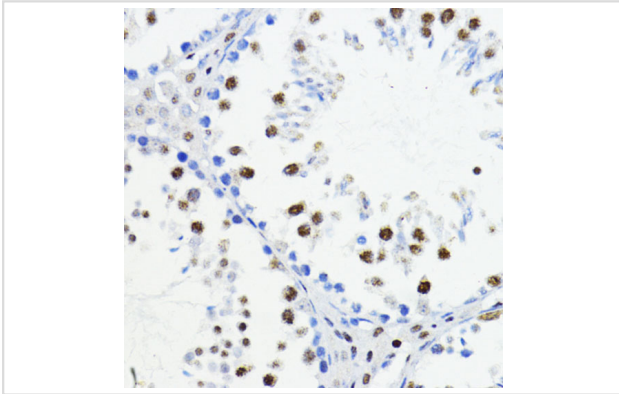
Western blot analysis of extracts of various cell lines, using ZEB1 antibody.



Immunohistochemistry of paraffin-embedded human mammary cancer using ZEB1 antibody.



Immunohistochemistry of paraffin-embedded rat testis using ZEB1 antibody.



Immunohistochemistry of paraffin-embedded mouse testis using ZEB1 antibody.

Background

This gene encodes a zinc finger transcription factor. The encoded protein likely plays a role in transcriptional repression of interleukin 2. Mutations in this gene have been associated with posterior polymorphous corneal dystrophy-3 and late-onset Fuchs endothelial corneal dystrophy. Alternatively spliced transcript variants encoding different isoforms have been described.

Note: This product is for in vitro research use only