

CLOCK antibody

Catalog No: #38677

Package Size: #38677-1 50ul #38677-2 100ul

Orders: order@signalwayantibody.com

Support: tech@signalwayantibody.com

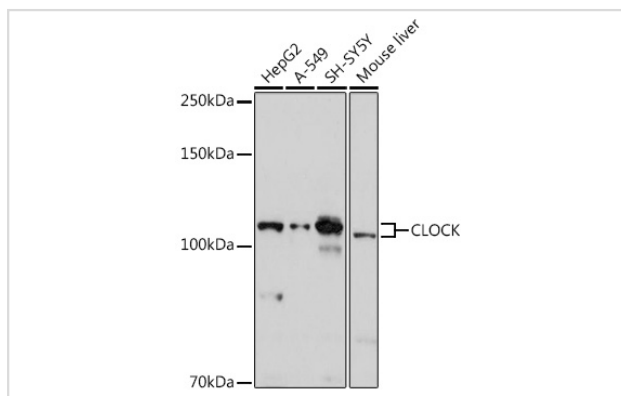
Description

Product Name	CLOCK antibody
Host Species	Rabbit
Clonality	Polyclonal
Purification	Antibodies were purified by affinity purification using immunogen.
Applications	WB
Species Reactivity	Human,Mouse,Rat
Specificity	The antibody detects endogenous level of total CLOCK protein.
Immunogen Type	Peptide
Immunogen Description	A synthetic peptide of human CLOCK.
Target Name	CLOCK
Other Names	KAT13D; bHLHe8;
Accession No.	Swiss-Prot#: O15516NCBI Gene ID: 9575
Uniprot	O15516
GeneID	9575;
SDS-PAGE MW	95kd
Concentration	1.0mg/ml
Formulation	Supplied at 1.0mg/mL in phosphate buffered saline (without Mg ²⁺ and Ca ²⁺), pH 7.4, 150mM NaCl, 0.02% sodium azide and 50% glycerol.
Storage	Store at -20°C

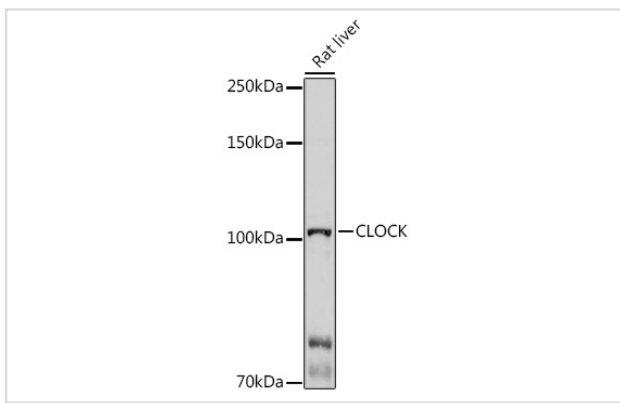
Application Details

WB □ 1:500 - 1:2000

Images



Western blot analysis of extracts of various cell lines, using CLOCK at 1:1000 dilution.



Western blot analysis of extracts of Rat liver, using CLOCK at 1:1000 dilution.

Background

The protein encoded by this gene plays a central role in the regulation of circadian rhythms. The protein encodes a transcription factor of the basic helix-loop-helix (bHLH) family and contains DNA binding histone acetyltransferase activity. The encoded protein forms a heterodimer with ARNTL (BMAL1) that binds E-box enhancer elements upstream of Period (PER1, PER2, PER3) and Cryptochrome (CRY1, CRY2) genes and activates transcription of these genes. PER and CRY proteins heterodimerize and repress their own transcription by interacting in a feedback loop with CLOCK/ARNTL complexes. Polymorphisms in this gene may be associated with behavioral changes in certain populations and with obesity and metabolic syndrome. Alternative splicing results in multiple transcript variants.

Note: This product is for in vitro research use only