

beta-glucosidase antibody

Catalog No: #22357

Orders: order@signalwayantibody.com

Support: tech@signalwayantibody.com

Description

Product Name	beta-glucosidase antibody
Host Species	Rabbit
Clonality	Polyclonal
Purification	Purified by antigen-affinity chromatography.
Applications	WB IHC IF
Species Reactivity	Hu
Immunogen Type	Recombinant protein
Immunogen Description	Recombinant protein fragment contain a sequence corresponding to a region within amino acids 352 and 529 of Human GBA
Target Name	beta-glucosidase
Accession No.	Swiss-Prot:P04062Gene ID:2629
Uniprot	P04062
GeneID	2629;
Concentration	0.8mg/ml
Formulation	Supplied in 0.1M Tris-buffered saline with 10% Glycerol (pH7.0). 0.01% Thimerosal was added as a preservative.
Storage	Store at -20°C for long term preservation (recommended). Store at 4°C for short term use.

Application Details

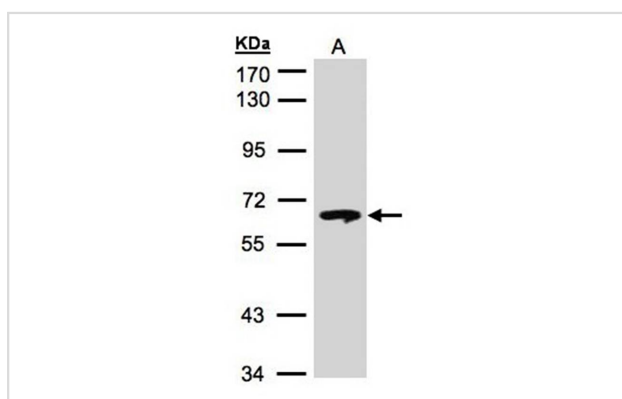
Predicted MW: 60kd

Western blotting: 1:500-1:3000

Immunohistochemistry: 1:100-1:250

Immunofluorescence: 1:100-1:200

Images

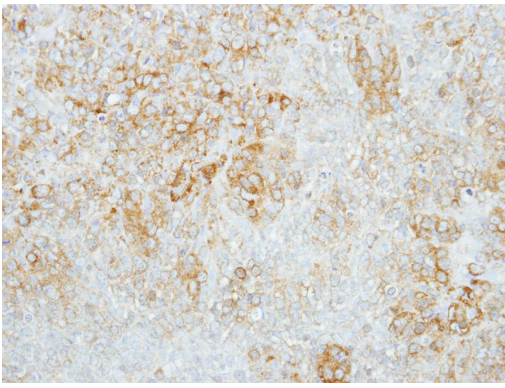


Sample(30 ug of whole cell lysate)

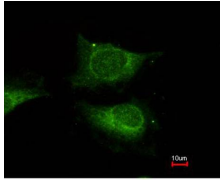
A: Hep G2

7.5% SDS PAGE

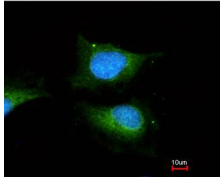
Primary antibody diluted at 1: 500



Immunohistochemical analysis of paraffin-embedded Lung CA, using GBA antibody at 1: 100 dilution.



Costained with Hoechst 33342



Immunofluorescence analysis of methanol-fixed HeLa, using GBA antibody at 1: 100 dilution.

Background

This gene encodes a lysosomal membrane protein that cleaves the beta-glucosidic linkage of glycosylceramide, an intermediate in glycolipid metabolism. Mutations in this gene cause Gaucher disease, a lysosomal storage disease characterized by an accumulation of glucocerebrosides. A related pseudogene is approximately 12 kb downstream of this gene on chromosome 1. Alternative splicing results in multiple transcript variants encoding the same protein. [provided by RefSeq]

Note: This product is for in vitro research use only