

NLRP3 antibody

Catalog No: #38679

Package Size: #38679-1 50ul #38679-2 100ul

Orders: order@signalwayantibody.com

Support: tech@signalwayantibody.com

Description

Product Name	NLRP3 antibody
Host Species	Rabbit
Clonality	Polyclonal
Isotype	IgG
Purification	Affinity purification
Applications	WB
Species Reactivity	Mouse,Rat
Specificity	The antibody detects endogenous level of total NLRP3 protein.
Immunogen Type	Recombinant Protein
Immunogen Description	Recombinant protein of human NLRP3
Target Name	NLRP3
Other Names	NLRP3;AGTAVPRL;AII;AVP;C1orf7;CIAS1;CLR1.1;FCAS;FCAS1;FCU;MWS;NALP3;PYPAF1
Accession No.	Uniprot:Q96P20GeneID:114548
Uniprot	Q96P20
GeneID	114548
SDS-PAGE MW	110KDa
Concentration	1.0mg/ml
Formulation	PBS with 0.02% sodium azide,50% glycerol,pH7.3.
Storage	Store at -20°C. Avoid freeze / thaw cycles.

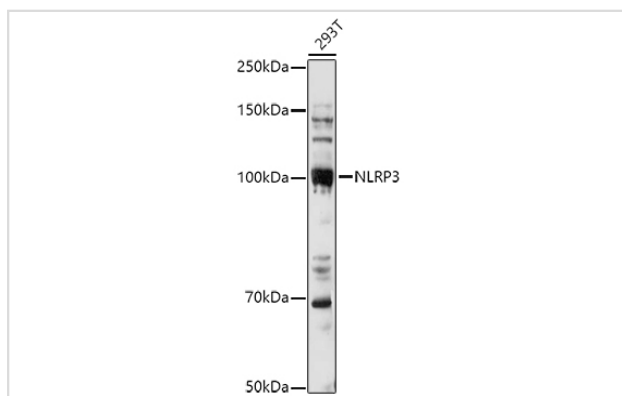
Application Details

WB □ 1:500 - 1:2000

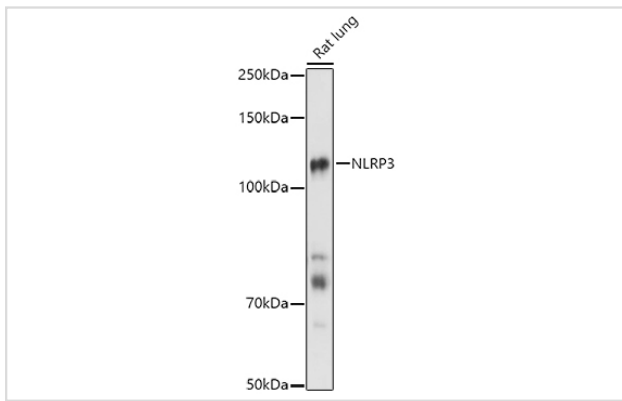
IHC □ 1:50 - 1:200

IF □ 1:50 - 1:200

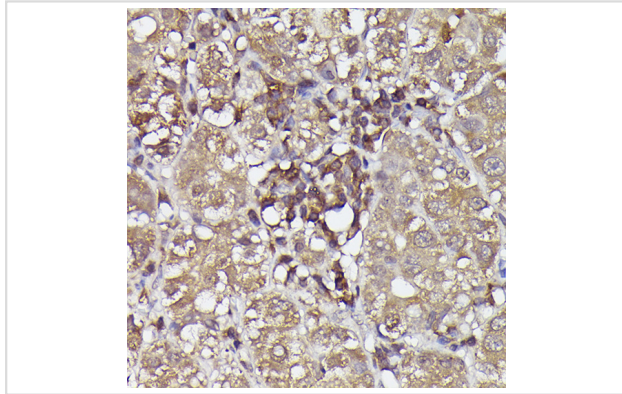
Images



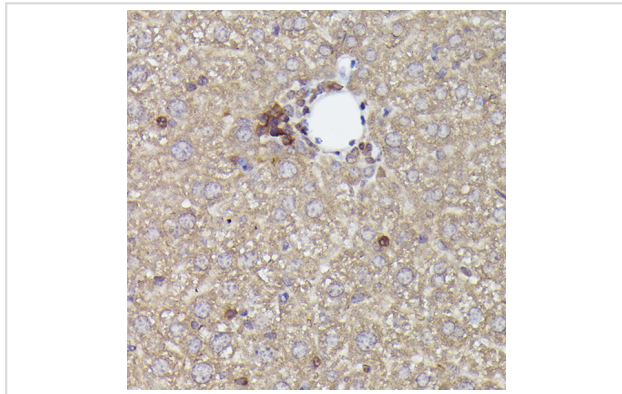
Western blot analysis of extracts of 293T cells, using NLRP3 antibody.



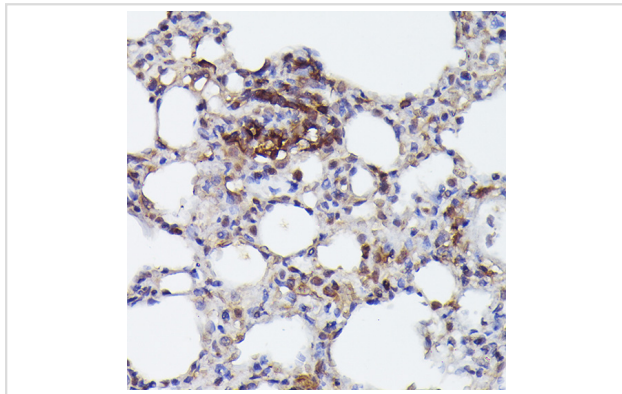
Western blot analysis of extracts of Rat lung, using NLRP3 antibody.



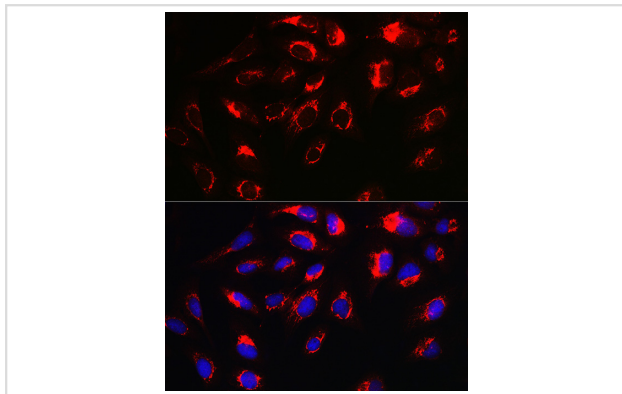
Immunohistochemistry of paraffin-embedded human liver cancer using NLRP3 antibody.



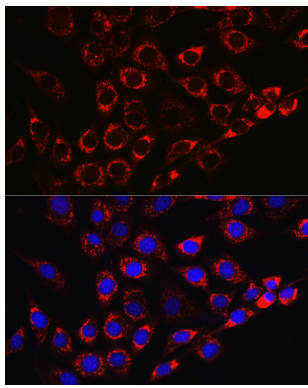
Immunohistochemistry of paraffin-embedded mouse liver using NLRP3 antibody.



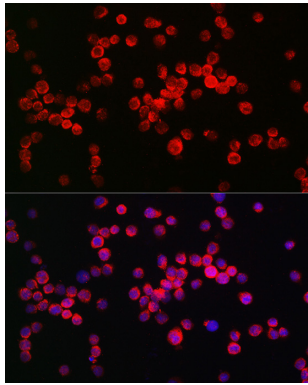
Immunohistochemistry of paraffin-embedded rat lung using NLRP3 antibody.



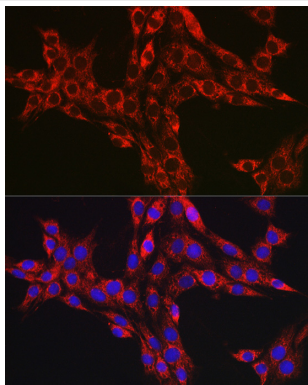
Immunofluorescence analysis of U2OS cells using NLRP3 antibody.



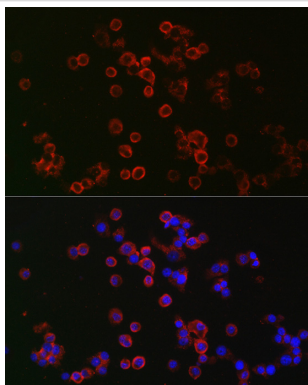
Immunofluorescence analysis of NIH/3T3 cells using NLRP3 antibody.



Immunofluorescence analysis of THP-1 cells using NLRP3 antibody.



Immunofluorescence analysis of PC-12 cells using NLRP3 antibody.



Immunofluorescence analysis of RAW264.7 cells using NLRP3 antibody.

Background

This gene encodes a pyrin-like protein containing a pyrin domain, a nucleotide-binding site (NBS) domain, and a leucine-rich repeat (LRR) motif. This protein interacts with the apoptosis-associated speck-like protein PYCARD/ASC, which contains a caspase recruitment domain, and is a member of the NALP3 inflammasome complex. This complex functions as an upstream activator of NF-kappaB signaling, and it plays a role in the regulation of inflammation, the immune response, and apoptosis. Mutations in this gene are associated with familial cold autoinflammatory syndrome (FCAS), Muckle-Wells syndrome (MWS), chronic infantile neurological cutaneous and articular (CINCA) syndrome, and neonatal-onset multisystem inflammatory disease (NOMID). Multiple alternatively spliced transcript variants encoding distinct isoforms have been identified for this gene. Alternative 5' UTR structures are suggested by available data; however, insufficient evidence is available to determine if all of the represented 5' UTR

splice patterns are biologically valid.

Note: This product is for in vitro research use only