

## TET2 antibody

Catalog No: #38680

Package Size: #38680-1 50ul #38680-2 100ul

Orders: [order@signalwayantibody.com](mailto:order@signalwayantibody.com)Support: [tech@signalwayantibody.com](mailto:tech@signalwayantibody.com)

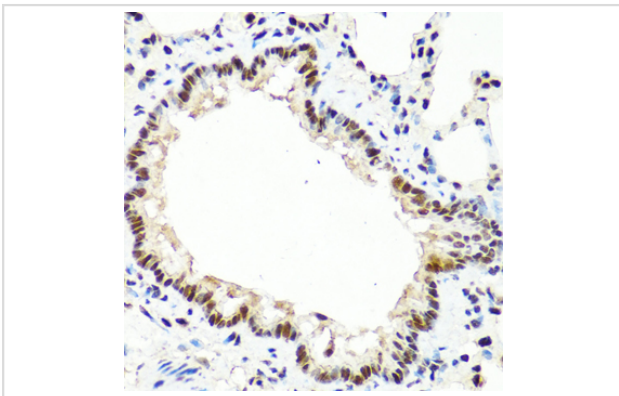
## Description

Product Name	TET2 antibody
Host Species	Rabbit
Clonality	Polyclonal
Isotype	IgG
Purification	Affinity purification
Applications	WB,IHC,IF
Species Reactivity	Human,Mouse,Rat
Specificity	The antibody detects endogenous level of total TET2 protein.
Immunogen Type	Recombinant Protein
Immunogen Description	Recombinant fusion protein of human TET2 (NP_001120680.1).
Target Name	TET2
Other Names	MDS;KIAA1546;TET2
Accession No.	Uniprot:Q6N021GeneID:54790
Uniprot	Q6N021
GeneID	54790
SDS-PAGE MW	280KDa
Concentration	1.0mg/ml
Formulation	PBS with 0.02% sodium azide,50% glycerol,pH7.3.
Storage	Store at -20°C. Avoid freeze / thaw cycles.

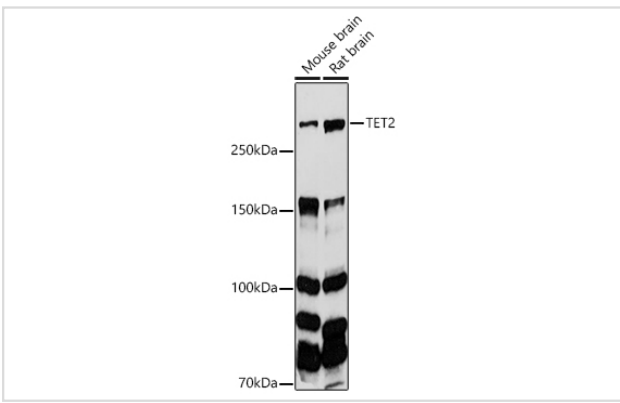
## Application Details

WB 1:500 - 1:2000 IHC 1:50 - 1:200 IF 1:50 - 1:200

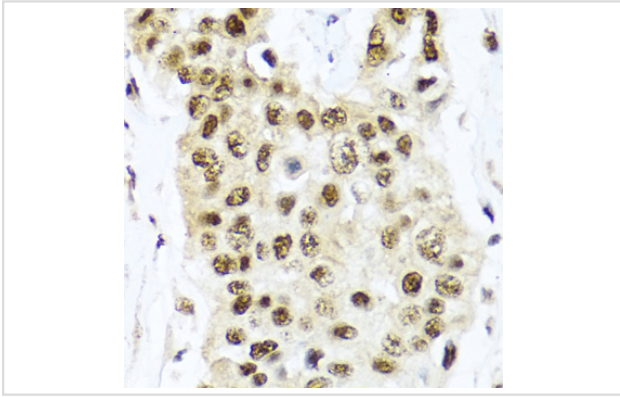
## Images



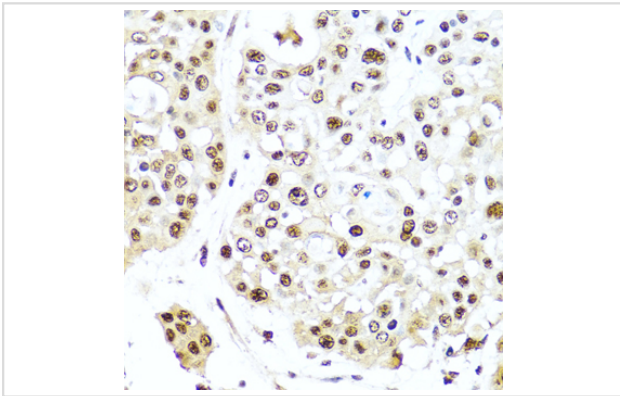
Immunohistochemistry of paraffin-embedded rat lung using TET2 antibody.



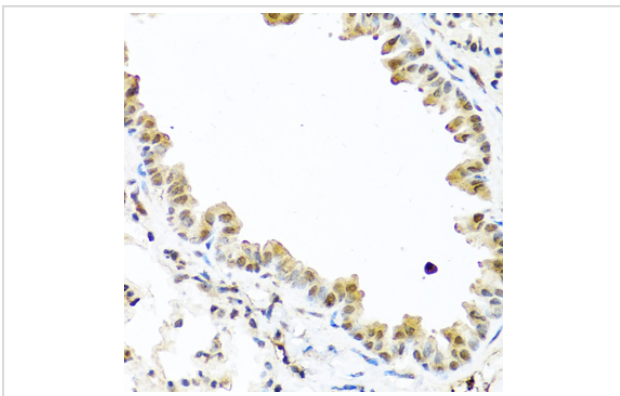
Western blot analysis of extracts of various cell lines, using TET2 antibody.



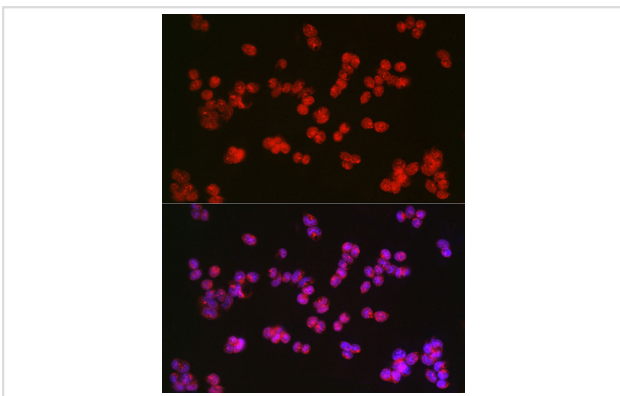
Immunohistochemistry of paraffin-embedded human lung cancer using TET2 antibody.



Immunohistochemistry of paraffin-embedded human colon carcinoma using TET2 antibody.



Immunohistochemistry of paraffin-embedded mouse lung using TET2 antibody.



Immunofluorescence analysis of F9 cells using TET2 Rabbit pAb.

## Background

---

The protein encoded by this gene is a methylcytosine dioxygenase that catalyzes the conversion of methylcytosine to 5-hydroxymethylcytosine. The encoded protein is involved in myelopoiesis, and defects in this gene have been associated with several myeloproliferative disorders. Two variants encoding different isoforms have been found for this gene.

---

Note: This product is for in vitro research use only