

GC antibody

Catalog No: #38683

Package Size: #38683-1 50ul #38683-2 100ul

Orders: order@signalwayantibody.comSupport: tech@signalwayantibody.com

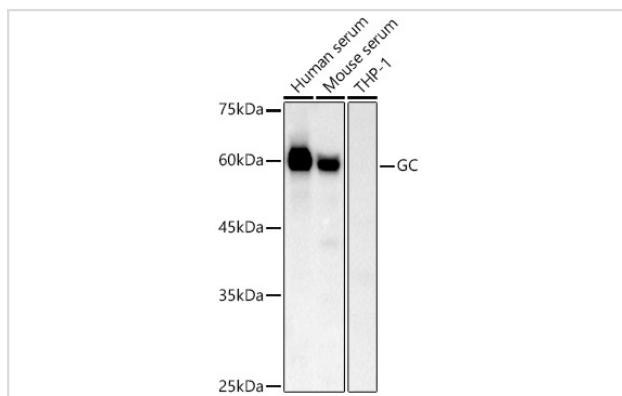
Description

Product Name	GC antibody
Host Species	Rabbit
Clonality	Polyclonal
Isotype	IgG
Purification	Affinity purification
Applications	WB
Species Reactivity	Human,Mouse
Specificity	The antibody detects endogenous level of total GC protein.
Immunogen Type	Recombinant Protein
Immunogen Description	Recombinant fusion protein of human GC (NP_001191236.1).
Target Name	GC
Other Names	GC;DBP;DBP/GC;GRD3;Gc-MAF;GcMAF;HEL-S-51;VDBG;VDBP
Accession No.	Uniprot:P02774GeneID:2638
Uniprot	P02774
GeneID	2638
SDS-PAGE MW	60KDa
Concentration	1.0mg/ml
Formulation	PBS with 0.02% sodium azide,50% glycerol,pH7.3.
Storage	Store at -20°C. Avoid freeze / thaw cycles.

Application Details

WB □ 1:500 - 1:2000

Images



Western blot analysis of extracts of various cell lines, using GC antibody.

Background

The protein encoded by this gene belongs to the albumin gene family. It is a multifunctional protein found in plasma, ascitic fluid, cerebrospinal fluid and on the surface of many cell types. It binds to vitamin D and its plasma metabolites and transports them to target tissues. Alternatively spliced transcript variants encoding different isoforms have been found for this gene.

Note: This product is for in vitro research use only