

SF3B2 antibody

Catalog No: #38701

Package Size: #38701-1 50ul #38701-2 100ul

Orders: order@signalwayantibody.com

Support: tech@signalwayantibody.com

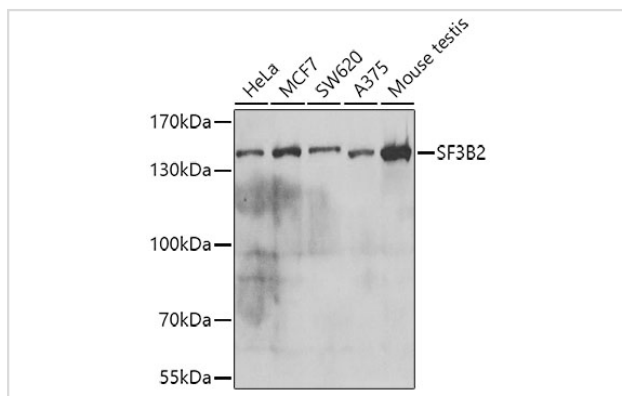
Description

Product Name	SF3B2 antibody
Host Species	Rabbit
Clonality	Polyclonal
Purification	Antibodies were purified by affinity purification using immunogen.
Applications	WB,IHC,IF
Species Reactivity	Human,Mouse,Rat
Specificity	The antibody detects endogenous level of total SF3B2 protein.
Immunogen Type	Recombinant Protein
Immunogen Description	Recombinant protein of human SF3B2.
Target Name	SF3B2
Other Names	Cus1; SF3b1; SAP145; SF3B145; SF3b150;
Accession No.	Swiss-Prot#: Q13435NCBI Gene ID: 10992
Uniprot	Q13435
GeneID	10992;
SDS-PAGE MW	100kd
Concentration	1.0mg/ml
Formulation	Supplied at 1.0mg/mL in phosphate buffered saline (without Mg ²⁺ and Ca ²⁺), pH 7.4, 150mM NaCl, 0.02% sodium azide and 50% glycerol.
Storage	Store at -20°C

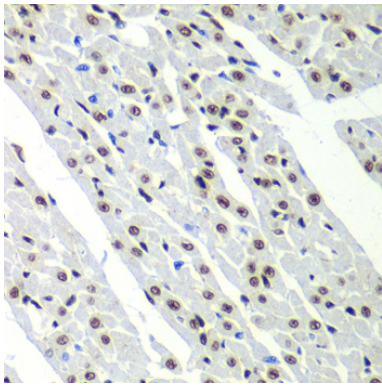
Application Details

WB □ 1:500 - 1:2000 IHC □ 1:50 - 1:200 IF □ 1:50 - 1:200

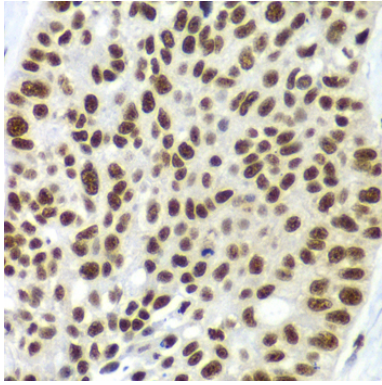
Images



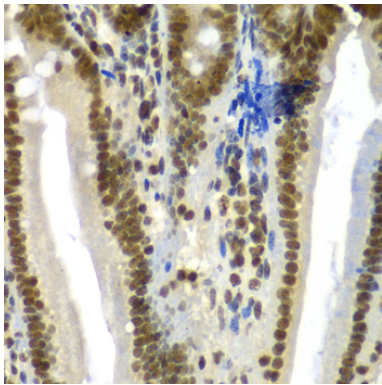
Western blot analysis of extracts of various cell lines, using SF3B2 at 1:1000 dilution.



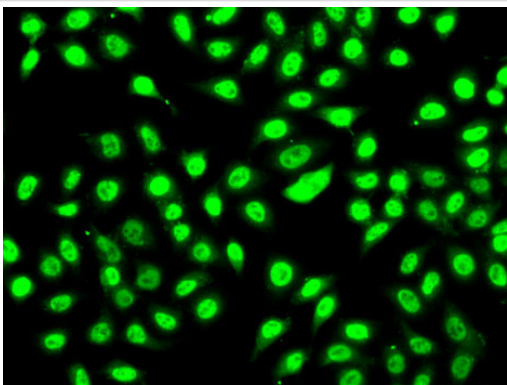
Immunohistochemistry of paraffin-embedded rat heart using SF3B2 at dilution of 1:100 (40x lens).



Immunohistochemistry of paraffin-embedded human lung cancer using SF3B2 at dilution of 1:100 (40x lens).



Immunohistochemistry of paraffin-embedded mouse Intestine using SF3B2 at dilution of 1:100 (40x lens).



Immunofluorescence analysis of A-549 cells using SF3B2 .

Background

This gene encodes subunit 2 of the splicing factor 3b protein complex. Splicing factor 3b, together with splicing factor 3a and a 12S RNA unit, forms the U2 small nuclear ribonucleoproteins complex (U2 snRNP). The splicing factor 3b/3a complex binds pre-mRNA upstream of the intron's branch site in a sequence-independent manner and may anchor the U2 snRNP to the pre-mRNA. Splicing factor 3b is also a component of the minor U12-type spliceosome. Subunit 2 associates with pre-mRNA upstream of the branch site at the anchoring site. Subunit 2 also interacts directly with subunit 4 of the splicing factor 3b complex. Subunit 2 is a highly hydrophilic protein with a proline-rich N-terminus and a glutamate-rich stretch in the C-terminus.

Note: This product is for in vitro research use only