

SBDS antibody

Catalog No: #38702

Package Size: #38702-1 50ul #38702-2 100ul

Orders: order@signalwayantibody.com

Support: tech@signalwayantibody.com

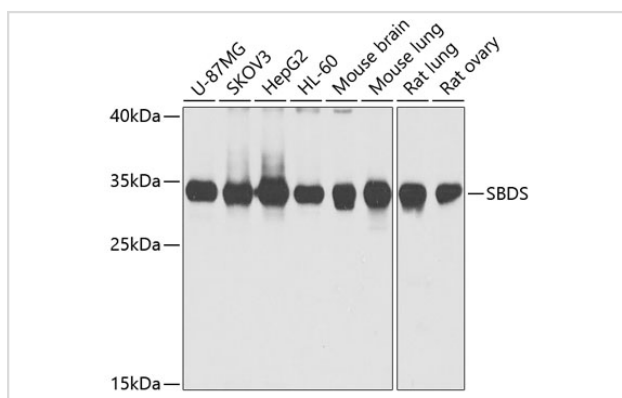
Description

Product Name	SBDS antibody
Host Species	Rabbit
Clonality	Polyclonal
Isotype	IgG
Purification	Affinity purification
Applications	WB
Species Reactivity	Human,Mouse,Rat
Specificity	The antibody detects endogenous level of total SBDS protein.
Immunogen Type	Recombinant Protein
Immunogen Description	Recombinant fusion protein of human SBDS (NP_057122.2).
Target Name	SBDS
Other Names	SBDS;CGI-97;SDS;SWDS
Accession No.	Uniprot:Q9Y3A5GeneID:51119
Uniprot	Q9Y3A5
GeneID	51119
SDS-PAGE MW	34kDa
Concentration	1.0mg/ml
Formulation	PBS with 0.02% sodium azide,50% glycerol,pH7.3.
Storage	Store at -20°C. Avoid freeze / thaw cycles.

Application Details

WB □ 1:500 - 1:2000

Images



Western blot analysis of extracts of various cell lines, using SBDS antibody.

Background

This gene encodes a member of a highly conserved protein family that exists from archaea to vertebrates and plants. The encoded protein may function in RNA metabolism. Mutations within this gene are associated with Shwachman-Bodian-Diamond syndrome. An alternative transcript has been described, but its biological nature has not been determined. This gene has a closely linked pseudogene that is distally located.

Note: This product is for in vitro research use only