

KTN1 antibody

Catalog No: #38704

Package Size: #38704-1 50ul #38704-2 100ul

Orders: order@signalwayantibody.com

Support: tech@signalwayantibody.com

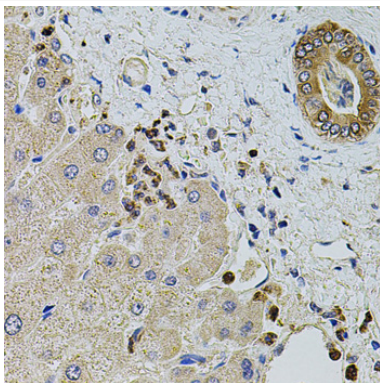
Description

Product Name	KTN1 antibody
Host Species	Rabbit
Clonality	Polyclonal
Purification	Antibodies were purified by affinity purification using immunogen.
Applications	WB,IHC
Species Reactivity	Human
Specificity	The antibody detects endogenous level of total KTN1 protein.
Immunogen Type	Recombinant Protein
Immunogen Description	Recombinant protein of human KTN1.
Target Name	KTN1
Other Names	CG1; KNT; MU-RMS-40.19;
Accession No.	Swiss-Prot#: Q86UP2NCBI Gene ID: 3895
Uniprot	Q86UP2
GeneID	3895;
SDS-PAGE MW	156kd
Concentration	1.0mg/ml
Formulation	Supplied at 1.0mg/mL in phosphate buffered saline (without Mg ²⁺ and Ca ²⁺), pH 7.4, 150mM NaCl, 0.02% sodium azide and 50% glycerol.
Storage	Store at -20°C

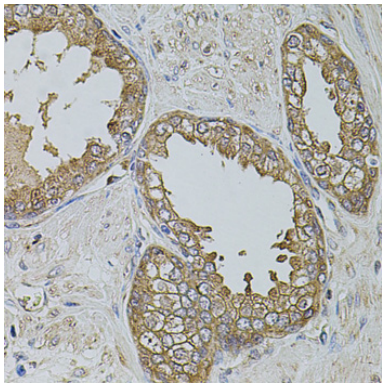
Application Details

WB □ 1:500 - 1:2000 IHC □ 1:50 - 1:200

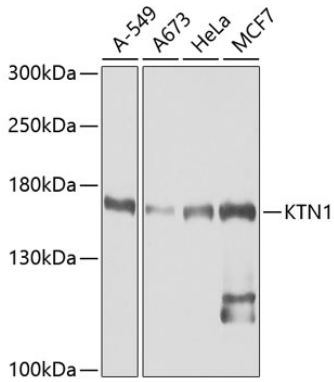
Images



Immunohistochemistry of paraffin-embedded human liver damage using KTN1 at dilution of 1:100 (40x lens).



Immunohistochemistry of paraffin-embedded human prostate using KTN1 at dilution of 1:100 (40x lens).



Western blot analysis of extracts of various cell lines, using KTN1 at 1:1000 dilution.

Background

This gene encodes an integral membrane protein that is a member of the kinectin protein family. The encoded protein is primarily localized to the endoplasmic reticulum membrane. This protein binds kinesin and may be involved in intracellular organelle motility. This protein also binds translation elongation factor-delta and may be involved in the assembly of the elongation factor-1 complex. Alternate splicing results in multiple transcript variants of this gene.

Note: This product is for in vitro research use only