

RPS12 antibody

Catalog No: #38711

Package Size: #38711-1 50ul #38711-2 100ul

Orders: order@signalwayantibody.comSupport: tech@signalwayantibody.com

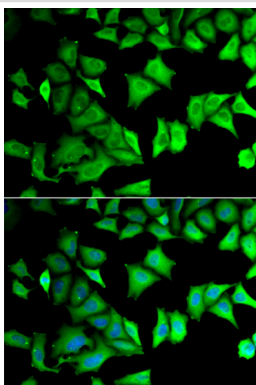
Description

Product Name	RPS12 antibody
Host Species	Rabbit
Clonality	Polyclonal
Isotype	IgG
Purification	Affinity purification
Applications	WB,IF
Species Reactivity	Human,Mouse,Rat
Specificity	The antibody detects endogenous level of total RPS12 protein.
Immunogen Type	Recombinant Protein
Immunogen Description	Recombinant fusion protein of human RPS12 (NP_001007.2).
Target Name	RPS12
Other Names	RPS12;S12
Accession No.	Uniprot:P25398GenelD:6206
Uniprot	P25398
GenelD	6206
SDS-PAGE MW	15kDa
Concentration	1.0mg/ml
Formulation	PBS with 0.02% sodium azide,50% glycerol,pH7.3.
Storage	Store at -20°C. Avoid freeze / thaw cycles.

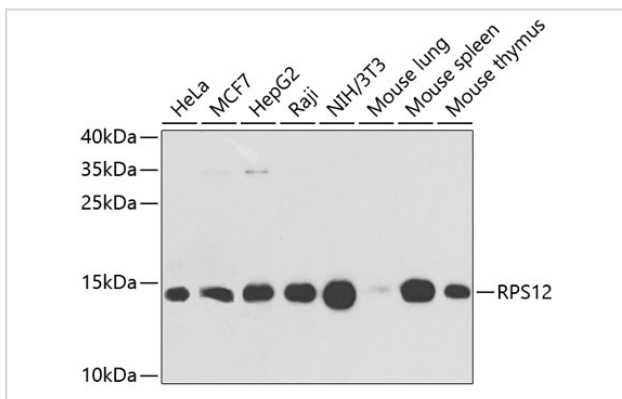
Application Details

WB □ 1:500 - 1:2000 IF □ 1:10 - 1:100

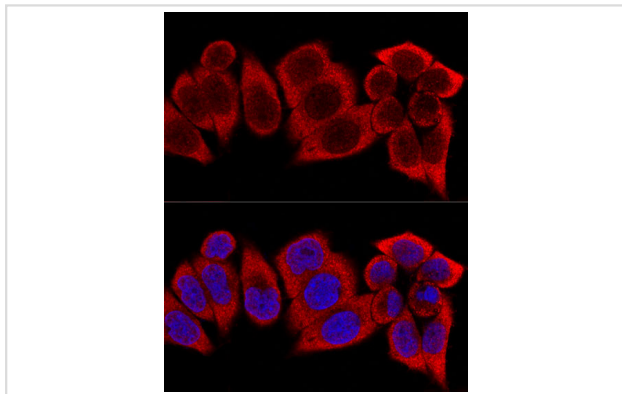
Images



Immunofluorescence analysis of MCF-7 cells using RPS12 antibody.



Western blot analysis of extracts of various cell lines, using RPS12 antibody.



Confocal immunofluorescence analysis of HeLa cells using RPS12 Polyclonal Antibody.

Background

Ribosomes, the organelles that catalyze protein synthesis, consist of a small 40S subunit and a large 60S subunit. Together these subunits are composed of 4 RNA species and approximately 80 structurally distinct proteins. This gene encodes a ribosomal protein that is a component of the 40S subunit. The protein belongs to the S12E family of ribosomal proteins. It is located in the cytoplasm. Increased expression of this gene in colorectal cancers compared to matched normal colonic mucosa has been observed. As is typical for genes encoding ribosomal proteins, there are multiple processed pseudogenes of this gene dispersed through the genome.

Note: This product is for in vitro research use only