

CRABP2 antibody

Catalog No: #38717

Package Size: #38717-1 50ul #38717-2 100ul

Orders: order@signalwayantibody.com

Support: tech@signalwayantibody.com

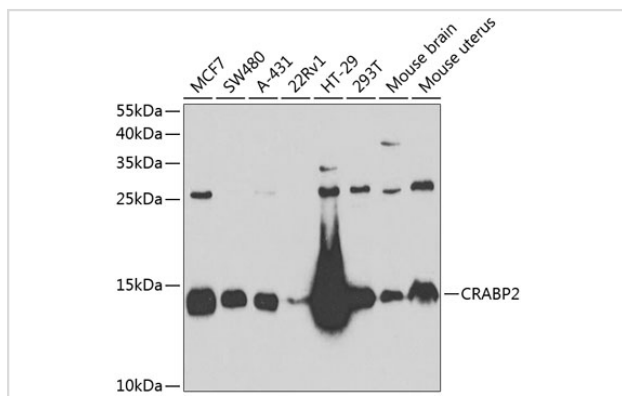
Description

Product Name	CRABP2 antibody
Host Species	Rabbit
Clonality	Polyclonal
Isotype	IgG
Purification	Affinity purification
Applications	WB,IF
Species Reactivity	Human,Mouse,Rat
Specificity	The antibody detects endogenous level of total CRABP2 protein.
Immunogen Type	Recombinant Protein
Immunogen Description	Recombinant fusion protein of human CRABP2 (NP_001869.1).
Target Name	CRABP2
Other Names	CRABP2;CRABP-II;RBP6
Accession No.	Uniprot:P29373GenID:1382
Uniprot	P29373
GenID	1382
SDS-PAGE MW	15kDa
Concentration	1.0mg/ml
Formulation	PBS with 0.02% sodium azide,50% glycerol,pH7.3.
Storage	Store at -20°C. Avoid freeze / thaw cycles.

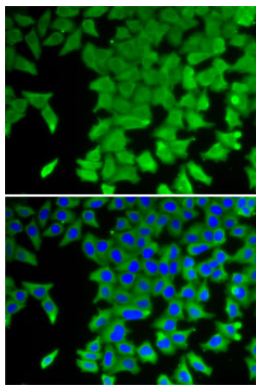
Application Details

WB □ 1:500 - 1:2000 IF □ 1:20 - 1:100

Images



Western blot analysis of extracts of various cell lines, using CRABP2 antibody.



Immunofluorescence analysis of U2OS cells using CRABP2 antibody.

Background

This gene encodes a member of the retinoic acid (RA, a form of vitamin A) binding protein family and lipocalin/cytosolic fatty-acid binding protein family. The protein is a cytosol-to-nuclear shuttling protein, which facilitates RA binding to its cognate receptor complex and transfer to the nucleus. It is involved in the retinoid signaling pathway, and is associated with increased circulating low-density lipoprotein cholesterol. Alternatively spliced transcript variants encoding the same protein have been found for this gene.

Note: This product is for in vitro research use only