

CLCN2 antibody

Catalog No: #38718

Package Size: #38718-1 50ul #38718-2 100ul

Orders: order@signalwayantibody.com

Support: tech@signalwayantibody.com

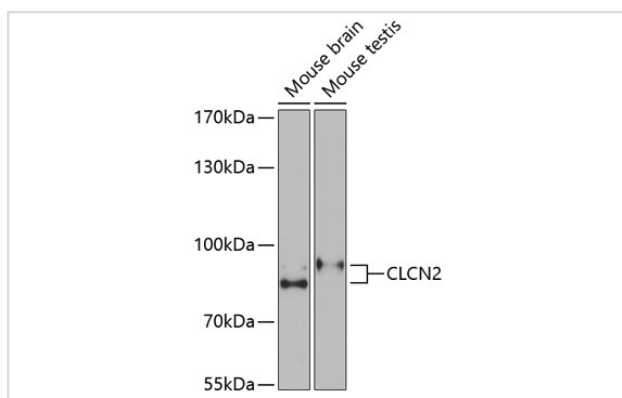
Description

Product Name	CLCN2 antibody
Host Species	Rabbit
Clonality	Polyclonal
Purification	Antibodies were purified by affinity purification using immunogen.
Applications	WB
Species Reactivity	Human,Mouse
Specificity	The antibody detects endogenous level of total CLCN2 protein.
Immunogen Type	Recombinant Protein
Immunogen Description	Recombinant protein of human CLCN2.
Target Name	CLCN2
Other Names	CLC2; ECA2; ECA3; EGI3; EGMA; EJM6; EJM8; CIC-2; EGI11; LKPAT; cIC-2;
Accession No.	Swiss-Prot#: P51788NCBI Gene ID: 1181
Uniprot	P51788
GeneID	1181;
SDS-PAGE MW	98kd
Concentration	1.0mg/ml
Formulation	Supplied at 1.0mg/mL in phosphate buffered saline (without Mg ²⁺ and Ca ²⁺), pH 7.4, 150mM NaCl, 0.02% sodium azide and 50% glycerol.
Storage	Store at -20°C

Application Details

WB □ 1:500 - 1:2000

Images



Western blot analysis of extracts of various cell lines, using CLCN2 at 1:1000 dilution.

Background

This gene encodes a voltage-gated chloride channel. The encoded protein is a transmembrane protein that maintains chloride ion homeostasis in various cells. Defects in this gene may be a cause of certain epilepsies. Four transcript variants encoding different isoforms have been found for this gene.

Note: This product is for in vitro research use only