

PIGR antibody

Catalog No: #38723

Package Size: #38723-1 50ul #38723-2 100ul

Orders: order@signalwayantibody.com

Support: tech@signalwayantibody.com

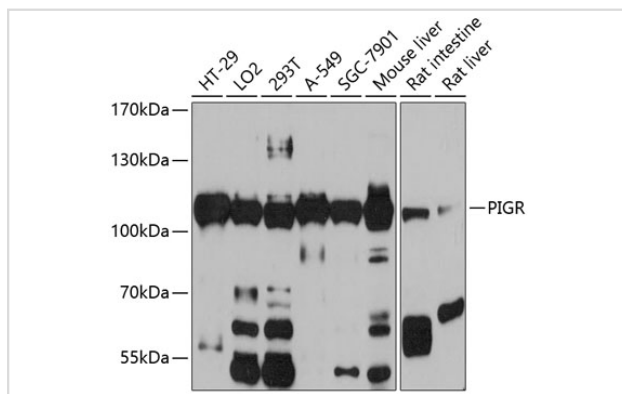
Description

Product Name	PIGR antibody
Host Species	Rabbit
Clonality	Polyclonal
Purification	Antibodies were purified by affinity purification using immunogen.
Applications	WB,IHC,IF
Species Reactivity	Human,Mouse,Rat
Specificity	The antibody detects endogenous level of total PIGR protein.
Immunogen Type	Recombinant Protein
Immunogen Description	Recombinant protein of human PIGR.
Target Name	PIGR
Accession No.	Swiss-Prot#: P01833NCBI Gene ID: 5284
Uniprot	P01833
GeneID	5284;
SDS-PAGE MW	83kd
Concentration	1.0mg/ml
Formulation	Supplied at 1.0mg/mL in phosphate buffered saline (without Mg ²⁺ and Ca ²⁺), pH 7.4, 150mM NaCl, 0.02% sodium azide and 50% glycerol.
Storage	Store at -20°C

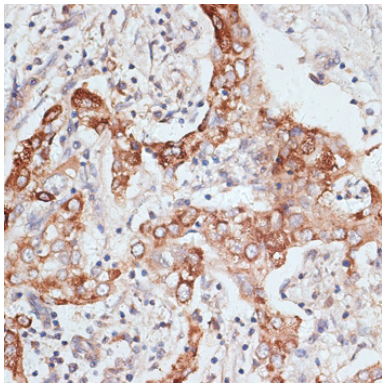
Application Details

WB □ 1:500 - 1:2000 IHC □ 1:50 - 1:200 IF □ 1:50 - 1:200

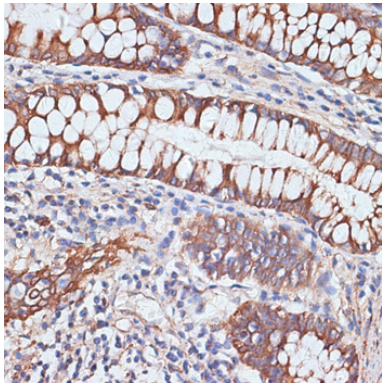
Images



Western blot analysis of extracts of various cell lines, using PIGR at 1:1000 dilution.



Immunohistochemistry of paraffin-embedded human liver cancer using PIGR at dilution of 1:100 (40x lens).



Immunohistochemistry of paraffin-embedded human colon using PIGR at dilution of 1:100 (40x lens).

Background

This gene is a member of the immunoglobulin superfamily. The encoded poly-Ig receptor binds polymeric immunoglobulin molecules at the basolateral surface of epithelial cells; the complex is then transported across the cell to be secreted at the apical surface. A significant association was found between immunoglobulin A nephropathy and several SNPs in this gene.

Note: This product is for in vitro research use only