

## ENTPD6(CD39L2) antibody

Catalog No: #22362

Orders: [order@signalwayantibody.com](mailto:order@signalwayantibody.com)Support: [tech@signalwayantibody.com](mailto:tech@signalwayantibody.com)

## Description

Product Name	ENTPD6(CD39L2) antibody
Host Species	Rabbit
Clonality	Polyclonal
Purification	Purified by antigen-affinity chromatography.
Applications	WB IHC
Species Reactivity	Hu
Immunogen Type	Recombinant protein
Immunogen Description	Recombinant protein fragment contain a sequence corresponding to a region within amino acids 64 and 285 of Human ENTPD6
Target Name	ENTPD6(CD39L2)
Accession No.	Swiss-Prot:O75354Gene ID:955
Uniprot	O75354
GeneID	955;
Concentration	1mg/ml
Formulation	Supplied in 0.1M Tris-buffered saline with 10% Glycerol (pH7.0). 0.01% Thimerosal was added as a preservative.
Storage	Store at -20°C for long term preservation (recommended). Store at 4°C for short term use.

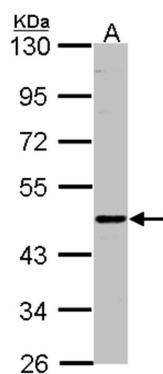
## Application Details

Predicted MW: 53kd

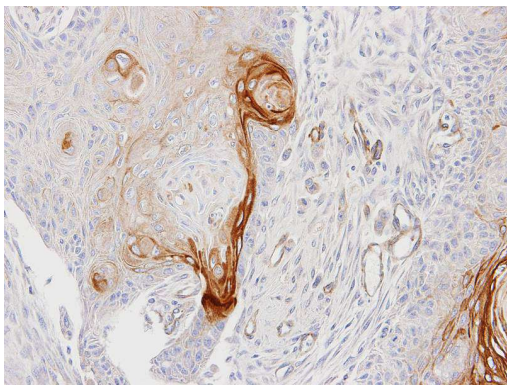
Western blotting: 1:500-1:3000

Immunohistochemistry: 1:100-1:250

## Images



Sample(30 ug of whole cell lysate)  
A: H1299  
7.5% SDS PAGE  
Primary antibody diluted at 1: 500



Immunohistochemical analysis of paraffin-embedded Ca922 xenograft, using ENTPD6 antibody at 1: 100 dilution.

## Background

ENTPD6 is similar to E-type nucleotidases (NTPases). NTPases, such as CD39, mediate catabolism of extracellular nucleotides. ENTPD6 contains 4 apyrase-conserved regions which is characteristic of NTPases. Alternatively spliced transcript variants encoding different isoforms have been found for this gene. [provided by RefSeq]

Note: This product is for in vitro research use only