

ERCC6L antibody

Catalog No: #38729

Package Size: #38729-1 50ul #38729-2 100ul

Orders: order@signalwayantibody.com

Support: tech@signalwayantibody.com

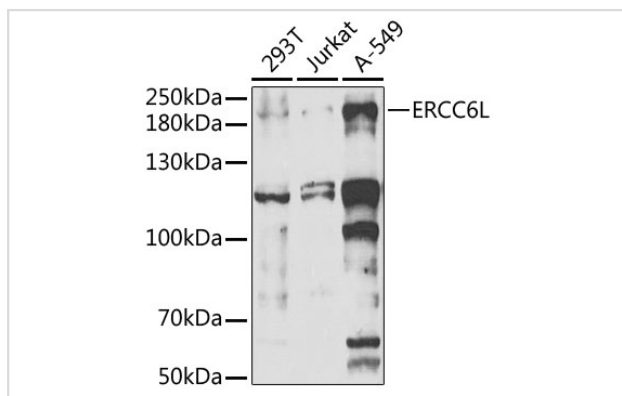
Description

Product Name	ERCC6L antibody
Host Species	Rabbit
Clonality	Polyclonal
Purification	Antibodies were purified by affinity purification using immunogen.
Applications	WB
Species Reactivity	Human
Specificity	The antibody detects endogenous level of total ERCC6L protein.
Immunogen Type	Recombinant Protein
Immunogen Description	Recombinant protein of human ERCC6L.
Target Name	ERCC6L
Other Names	PICH; RAD26L;
Accession No.	Swiss-Prot#: Q2NKX8NCBI Gene ID: 54821
Uniprot	Q2NKX8
GeneID	54821;
SDS-PAGE MW	141kd
Concentration	1.0mg/ml
Formulation	Supplied at 1.0mg/mL in phosphate buffered saline (without Mg ²⁺ and Ca ²⁺), pH 7.4, 150mM NaCl, 0.02% sodium azide and 50% glycerol.
Storage	Store at -20°C

Application Details

WB □ 1:500 - 1:2000

Images



Western blot analysis of extracts of various cell lines, using ERCC6L at 1:1000 dilution.

Background

DNA helicase that acts as an essential component of the spindle assembly checkpoint. Contributes to the mitotic checkpoint by recruiting MAD2 to kinetochores and monitoring tension on centromeric chromatin. Acts as a tension sensor that associates with catenated DNA which is stretched under tension until it is resolved during anaphase.

Note: This product is for in vitro research use only