

## MLL5 antibody

Catalog No: #38731

Package Size: #38731-1 50ul #38731-2 100ul

Orders: order@signalwayantibody.com

Support: tech@signalwayantibody.com

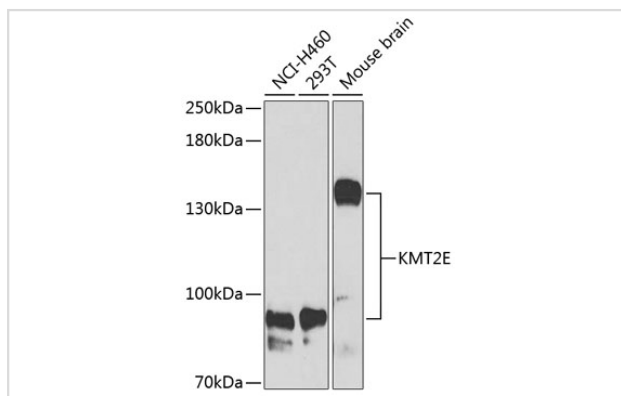
## Description

Product Name	MLL5 antibody
Host Species	Rabbit
Clonality	Polyclonal
Purification	Antibodies were purified by affinity purification using immunogen.
Applications	WB,IHC,IF
Species Reactivity	Human,Mouse,Rat
Specificity	The antibody detects endogenous level of total MLL5 protein.
Immunogen Type	Recombinant Protein
Immunogen Description	Recombinant protein of human MLL5.
Target Name	MLL5
Other Names	MLL5; NKp44L; HDCMC04P;
Accession No.	Swiss-Prot#: Q8IZD2NCBI Gene ID: 55904
Uniprot	Q8IZD2
GeneID	55904;
SDS-PAGE MW	205kd
Concentration	1.0mg/ml
Formulation	Supplied at 1.0mg/mL in phosphate buffered saline (without Mg <sup>2+</sup> and Ca <sup>2+</sup> ), pH 7.4, 150mM NaCl, 0.02% sodium azide and 50% glycerol.
Storage	Store at -20°C

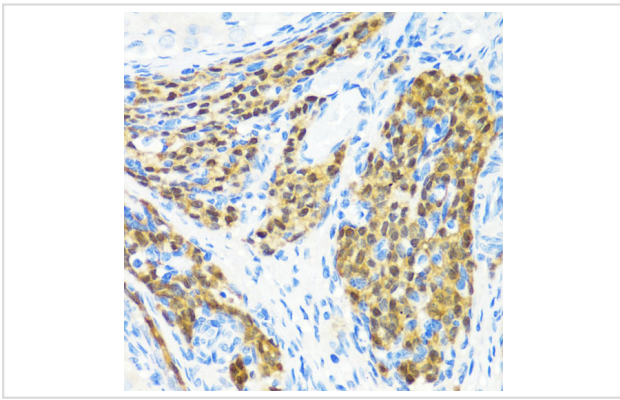
## Application Details

WB □ 1:500 - 1:2000 IHC □ 1:50 - 1:200 IF □ 1:50 - 1:200

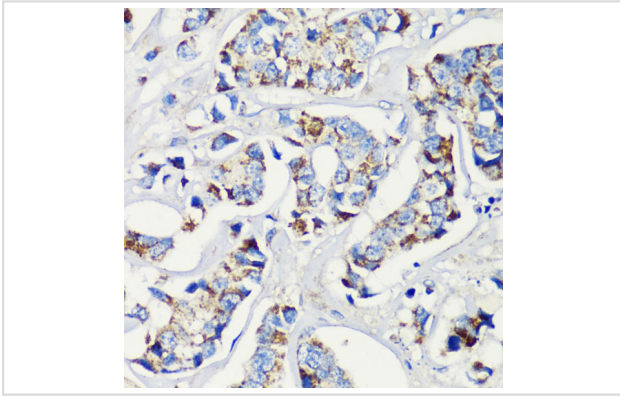
## Images



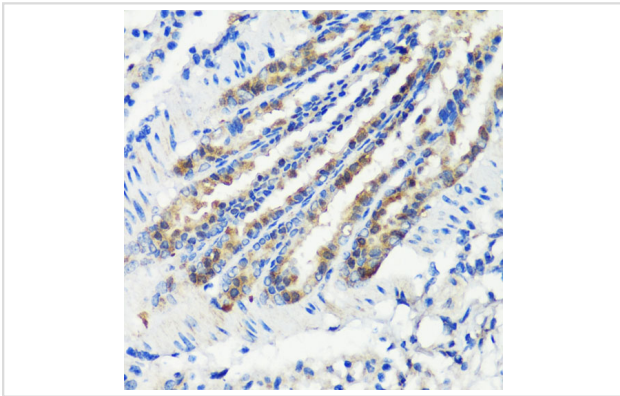
Western blot analysis of extracts of various cell lines, using KMT2E at 1:1000 dilution.



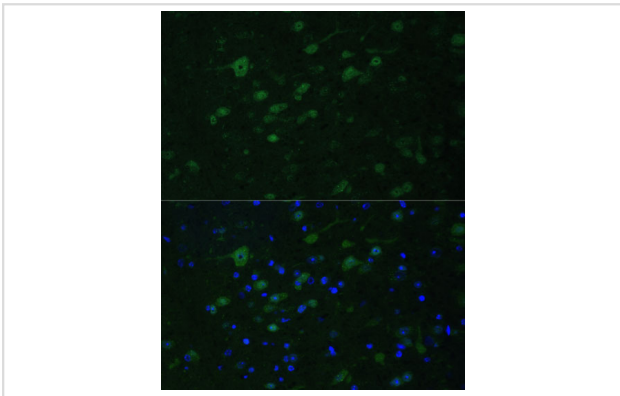
Immunohistochemistry of paraffin-embedded rat ovary using KMT2E at dilution of 1:200 (40x lens).



Immunohistochemistry of paraffin-embedded human breast cancer using KMT2E at dilution of 1:200 (40x lens).



Immunohistochemistry of paraffin-embedded mouse lung using KMT2E at dilution of 1:200 (40x lens).



Immunofluorescence analysis of mouse brain using KMT2E at dilution of 1:100. Blue: DAPI for nuclear staining.

## Background

This gene is a member of the myeloid/lymphoid or mixed-lineage leukemia (MLL) family and encodes a protein with an N-terminal PHD zinc finger and a central SET domain. Overexpression of the protein inhibits cell cycle progression. Alternate transcriptional splice variants have been characterized.

Note: This product is for in vitro research use only