

CTCFL antibody

Catalog No: #38735

Package Size: #38735-1 50ul #38735-2 100ul

Orders: order@signalwayantibody.com

Support: tech@signalwayantibody.com

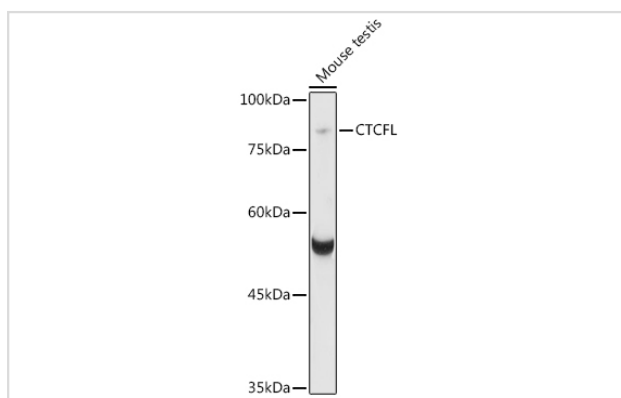
Description

Product Name	CTCFL antibody
Host Species	Rabbit
Clonality	Polyclonal
Isotype	IgG
Purification	Affinity purification
Applications	WB
Species Reactivity	Human,Mouse,Rat
Specificity	The antibody detects endogenous level of total CTCFL protein.
Immunogen Type	Recombinant Protein
Immunogen Description	Recombinant fusion protein of human CTCFL (NP_001255970.1).
Target Name	CTCFL
Other Names	CTCFL;BORIS;CT27;CTCF-T;HMGB1L1;dJ579F20.2
Accession No.	Uniprot:Q8NI51GeneID:140690
Uniprot	Q8NI51
GeneID	140690
SDS-PAGE MW	83kDa
Concentration	1.0mg/ml
Formulation	PBS with 0.02% sodium azide,50% glycerol,pH7.3.
Storage	Store at -20°C. Avoid freeze / thaw cycles.

Application Details

WB □ 1:500 - 1:2000

Images



Western blot analysis of extracts of various cell lines, using CTCFL antibody.

Background

CCCTC-binding factor (CTCF), an 11-zinc-finger factor involved in gene regulation, utilizes different zinc fingers to bind varying DNA target sites. CTCF forms methylation-sensitive insulators that regulate X-chromosome inactivation. This gene is a paralog of CTCF and appears to be expressed primarily in the cytoplasm of spermatocytes, unlike CTCF which is expressed primarily in the nucleus of somatic cells. CTCF and the protein encoded by this gene are normally expressed in a mutually exclusive pattern that correlates with resetting of methylation marks during male germ cell differentiation. Multiple alternatively spliced transcript variants encoding different isoforms have been found for this gene.

Note: This product is for in vitro research use only