

## IFI6 antibody

Catalog No: #38739

Package Size: #38739-1 50ul #38739-2 100ul

Orders: [order@signalwayantibody.com](mailto:order@signalwayantibody.com)Support: [tech@signalwayantibody.com](mailto:tech@signalwayantibody.com)

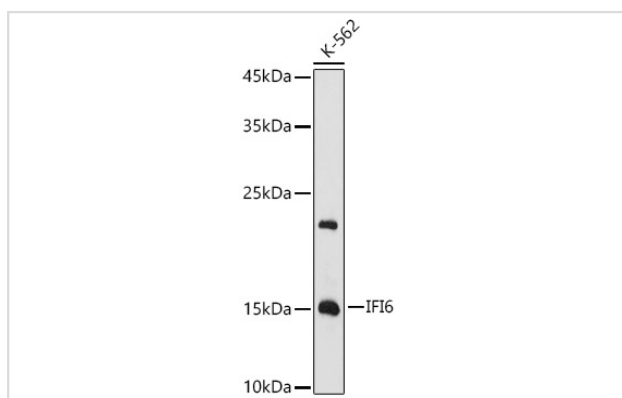
## Description

Product Name	IFI6 antibody
Host Species	Rabbit
Clonality	Polyclonal
Isotype	IgG
Purification	Affinity purification
Applications	WB
Species Reactivity	Human
Specificity	The antibody detects endogenous level of total IFI6 protein.
Immunogen Type	Recombinant Protein
Immunogen Description	Recombinant fusion protein of human IFI6 (NP_002029.3).
Target Name	IFI6
Other Names	IFI6;6-16;FAM14C;G1P3;IFI-6-16;IFI616
Accession No.	Uniprot:P09912GenelD:2537
Uniprot	P09912
GenelD	2537
SDS-PAGE MW	13KDa
Concentration	1.0mg/ml
Formulation	PBS with 0.02% sodium azide,50% glycerol,pH7.3.
Storage	Store at -20°C. Avoid freeze / thaw cycles.

## Application Details

WB □ 1:500 - 1:2000

## Images



Western blot analysis of extracts of K-562 cells, using IFI6 antibody.

## Background

---

This gene was first identified as one of the many genes induced by interferon. The encoded protein may play a critical role in the regulation of apoptosis. A minisatellite that consists of 26 repeats of a 12 nucleotide repeating element resembling the mammalian splice donor consensus sequence begins near the end of the second exon. Alternatively spliced transcript variants that encode different isoforms by using the two downstream repeat units as splice donor sites have been described.

---

Note: This product is for in vitro research use only